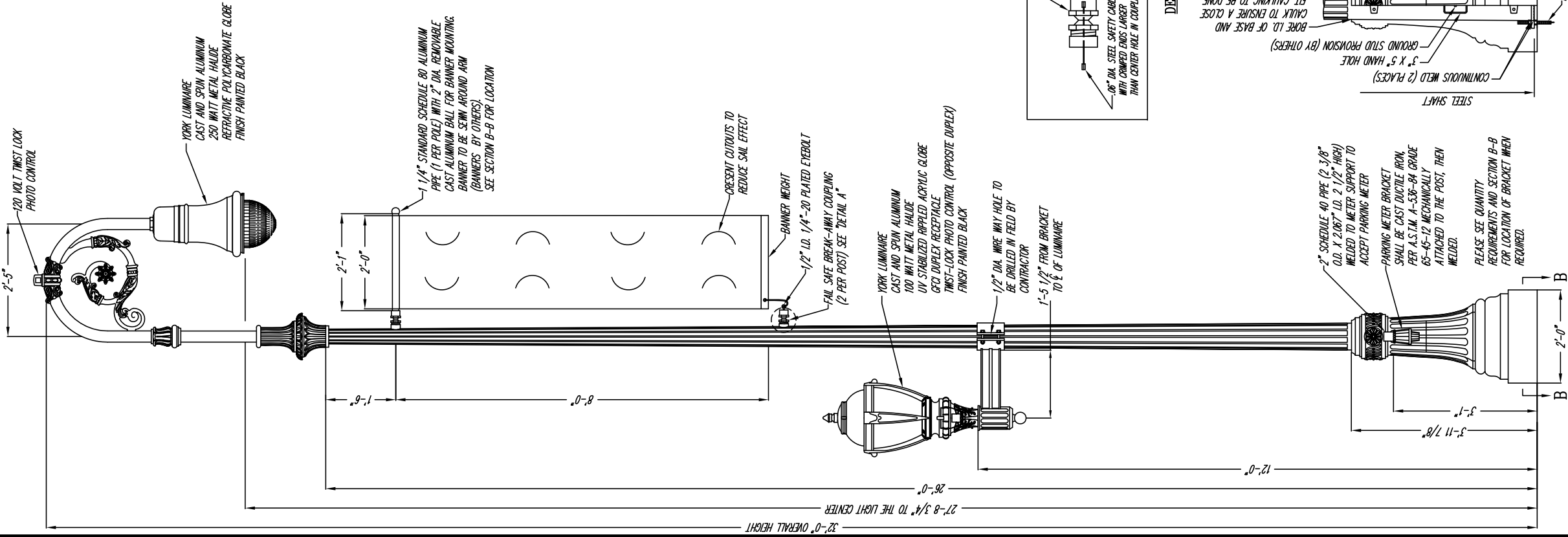


This drawing is property of Spring City Elect. Mfg. and is issued to the recipient with the understanding that it shall not be copied, duplicated, passed on to unauthorized parties, nor used for any purpose other than that for which it is specifically furnished except with Spring City's written permission.



LUMINAIRE SPECIFICATIONS

STYLE: BISHOP'S CROOK (110 REFRACTIVE GLOBE)
 HEIGHT: 33'
 WIDTH: 17"
 MATERIAL: CAST ALUMINUM AND SPIN ALUMINUM
 REFRACTIVE POLYCARBONATE
 GLOBE: PRIME PAINT THEN FINISH PAINT, SHERWIN WILLIAMS
 FINISH: ACRYLON - CEDAR GREEN SW-407Z
 LAMPING: 250 WATT HIGH PRESSURE SODIUM (LAMP BY OTHERS)
 VOLTAGE: 120 VOLT
 SOCKET: MODUL BASE
 DISTRIBUTION: TYPE III (ASYMMETRIC DISTRIBUTION)
 PHOTO CONTROL: 120 VOLT TMS LOCK PHOTOCELL

CROSS ARM SPECIFICATIONS

STYLE: BISHOP'S CROOK WITH RUSSELLFIELD ADAPTOR
 HEIGHT: 6'-0"
 WIDTH: 29" FROM $\frac{1}{2}$ OF CROOK TO $\frac{1}{2}$ OF LUMINAIRE
 MATERIAL: ALUMINUM PIPE WITH CAST ALUMINUM ORNAMENTATION
 FINISH: PRIME PAINT THEN FINISH PAINT, SHERWIN WILLIAMS
 ACRYLON - CEDAR GREEN SW-407Z

LAMP POST SPECIFICATIONS

STYLE: NORTHAMPTON STEEL
 HEIGHT: 26'-0"
 PHOTOMETRIC CENTER: 27'-8 3/4"
 BASE: 24" DIAMETER
 MATERIAL: 7 GAUGE, 12 FLAT FLUTE STEEL, MONOTUBE CONSTRUCTION
 SHAFT: 2 PIECE, (WRAP AROUND) HEAVY WALL CAST IRON PER A.S.T.M. A48-83 CLASS 30
 FINISH: PRIME PAINT THEN FINISH PAINT, SHERWIN WILLIAMS
 ACRYLON - CEDAR GREEN SW-407Z
 ACCESS DOOR: LOCATED IN BASE TO CONDUIT WITH HAND HOLE IN STEEL
 GROUND STUD PROVISIONS: SHAFT SECURED WITH TAMPER PROOF HEX SOCKET MACHINE SCREWS
 ANCHOR BOLTS: 1/4"-20 SQUARE NUT WELDED TO INSIDE WALL OF SHAFT OPPOSITE
 HAND HOLE FOR GROUND STUD (GROUND STUD PROVIDED BY OTHERS)
 BOLT PROJECTION: (4) 1" DIA. X 30" + 4" HOOK (FULLY GALVANIZED WITH 2 GALVANIZED NUTS AND 2 GALVANIZED WASHERS PER BOLT)
 TENSION: 5" REQUIRED
 3 1/2" DIA. X 6" HIGH (TO ACCEPT CROSS ARM)

BANNERS

SPRING CITY ELECTRICAL MFG. CO. WILL NOT BE HELD LIABLE FOR ANY DAMAGES INCURRED UNLESS THE FOLLOWING INFORMATION IS PROVIDED IN REGARD TO BANNERS:
 1. MATERIAL: NYLON OR CANVAS, MAY VARY
 2. THICKNESS OF MATERIAL: .010"
 3. SIZE, TYPE AND NUMBER OF CUTOUS: (8) 8" X 8" CRESCENT AS SHOWN
 4. HEIGHT OF BANNER HEIGHT: 1.1/4 LB

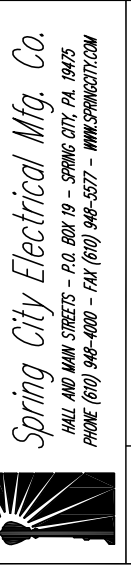
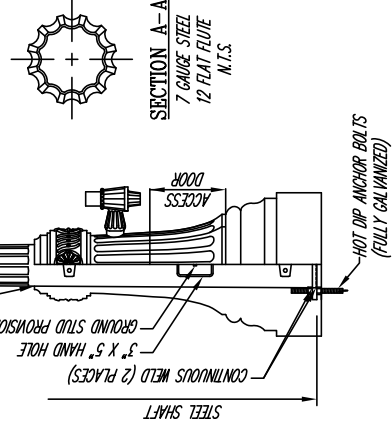
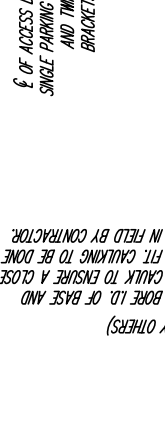
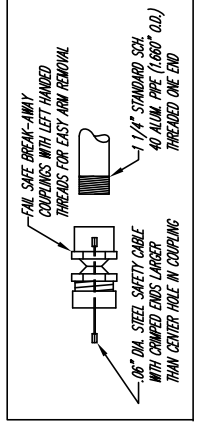
QUANTITY ... 2 LUMINAIRES REQUIRED PLUS 6 SPARE BALLASTS REQUIRED PER S.O. # 181662

POST MOUNT ARM SPECIFICATIONS

STYLE: WASHINGTON SIMPLE (CLAMP ON STYLE)
 HEIGHT: 7'-5/8"
 WIDTH: 21" FROM $\frac{1}{2}$ OF POST TO $\frac{1}{2}$ OF LUMINAIRE
 MATERIAL: CAST ALUMINUM
 FINISH: PRIME PAINT THEN FINISH PAINT, SHERWIN WILLIAMS
 ACRYLON - CLASSIC BLACK
 TENSION: 3" DIA. X 3" HIGH TENSION (TO ACCEPT LUMINAIRE)

CATALOG NO.:

ADDRESS: IS-18-TM3.00/3.00-CB
 YORK 39 1/2"
 19 15/16"
 CAST ALUMINUM AND SPIN ALUMINUM
 UV STABILIZED RIPPLED ACRYLIC
 FINISH PAINTED BLACK
 100 WATT METAL HALIDE (LAMP BY OTHERS)
 PLEASE SPECIFY VOLTAGE
 SEGMENTED ALUMINUM M2 REFLECTOR
 MODUL BASE
 GFCI DUPLEX RECEPTACLE
 TMS-LOCK PHOTO CONTROL



DESCRIPTION	THE NORTHAMPTON 26'-0" STEEL POST WITH THE BISHOP'S CROOK (WITH RUSSELLFIELD ADAPTER) ARM, THE BISHOP'S CROOK 110 REFRACTIVE GLOBE LUMINAIRE, THE WASHINGTON SIMPLE POST MOUNT ARM AND THE YORK LUMINAIRE		
CUSTOMER	CITY OF NEW HAVEN, CT		
JOB	SCALE	DATE	SPEC. NO.
	N.T.S.	B.A.R.	06-10-10
			SI01908

THE NORTHAMPTON 26'-0" STEEL POST WITH THE BISHOP'S CROOK (THE RUSSELL FIELD ADAPTER) ARM, THE BISHOP'S CROOK 110 REFLECTIVE GLOBE LUMINAIRE, THE WASHINGTON SIMPLE POST MOUNT ARM AND THE YORK LUMINAIRE

NOT TO SCALE

STEEL POSTS AND LUMINAIRES

AS NOTED