

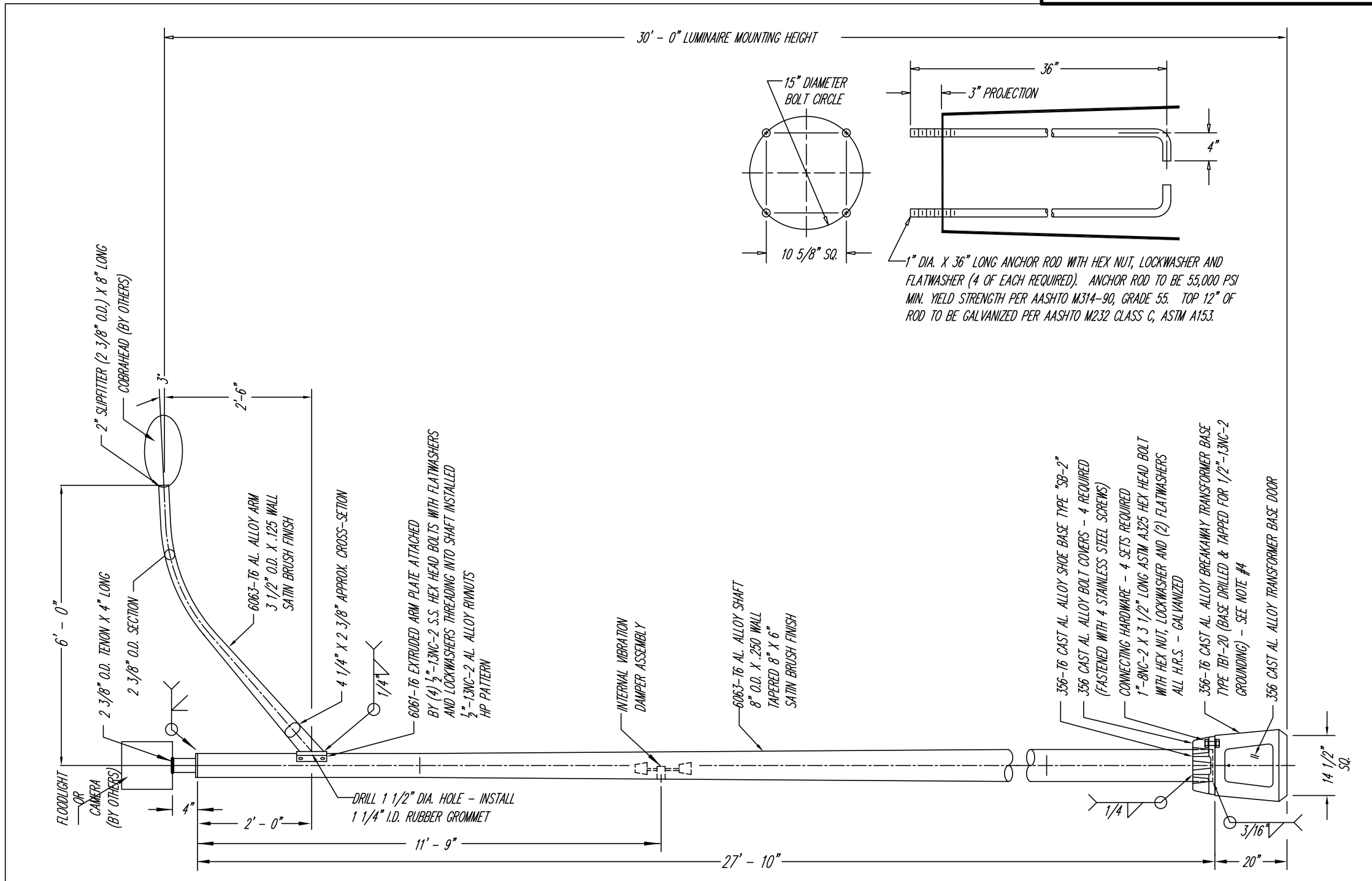
**Notes:**

Plans and Drawings are products as noted, and as recommended by the manufacturer. These Drawings may not represent the latest updates as provided by the manufacturer, so it is up to the contractors or vendors to submit shop drawings to the City Engineering Department for approval to insure conformance with these specifications.

**CITY OF NEW HAVEN  
DEPARTMENT OF ENGINEERING**

RICHARD H. MILLER, P.E., L.S. 9886  
CITY ENGINEER

DRIVE: X:\ENGINEER\DWG\CITYSTD
FILE: DETAILS\LIGHTING STANDARDS\2011 DETAILS
DATE: JULY 1, 2011
DRAWING NO.: <b>LD-NH-09</b>



**NOTE:**

1. - USE 4043 WELD WIRE.
2. - 6063-T4 ASSEMBLY .375 WALL OR LESS TO BE HEAT-TREATED TO T6 TEMPER AFTER WELDING.
3. - AFTER INSTALLATION, WARRANTY APPLIES ONLY IF THE ASSEMBLY IS COMPLETE INCLUDING LUMINAIRE(S) AND WIRING.
4. - TRANSFORMER BASE IS A FHWA APPROVED BREAKAWAY DEVICE MEETING THE REQUIREMENTS OF THE 1975 AASHTO SPECIFICATIONS.

REVISIONS				
ALT.	DESCRIPTION	DATE	BY	CHK.
1	ARM LENGTH / V DAMPER	12/24/09	SAF	

MATERIAL	
STOCK SIZE	
FINISH OR TEMPER	
CUSTOMER	NEW HAVEN, CT.

95 GNARLED HOLLOW RD.  
EAST SETAUKET, N.Y.  
11733

**flagpoles** P&K  
TUBULAR PRODUCTS, INC.

TITLE  
**RTB8X30IAS16V-45N**

DR. W.W.W. 11-23-09 DWG. NO.  
CHK. S.A.F. 11-23-09  
APP. DATE 11-23-09

SCALE NONE

10116R1

**ALUMINUM POLE ON TRANSFORMER BASE WITH 6'-0" ARM  
AND POLE EXTENSION TO ACCOMMODATE FLOODLIGHT OR CAMERA**

NOT TO SCALE

**ALUMINUM POLE AND ARM**

AS NOTED