

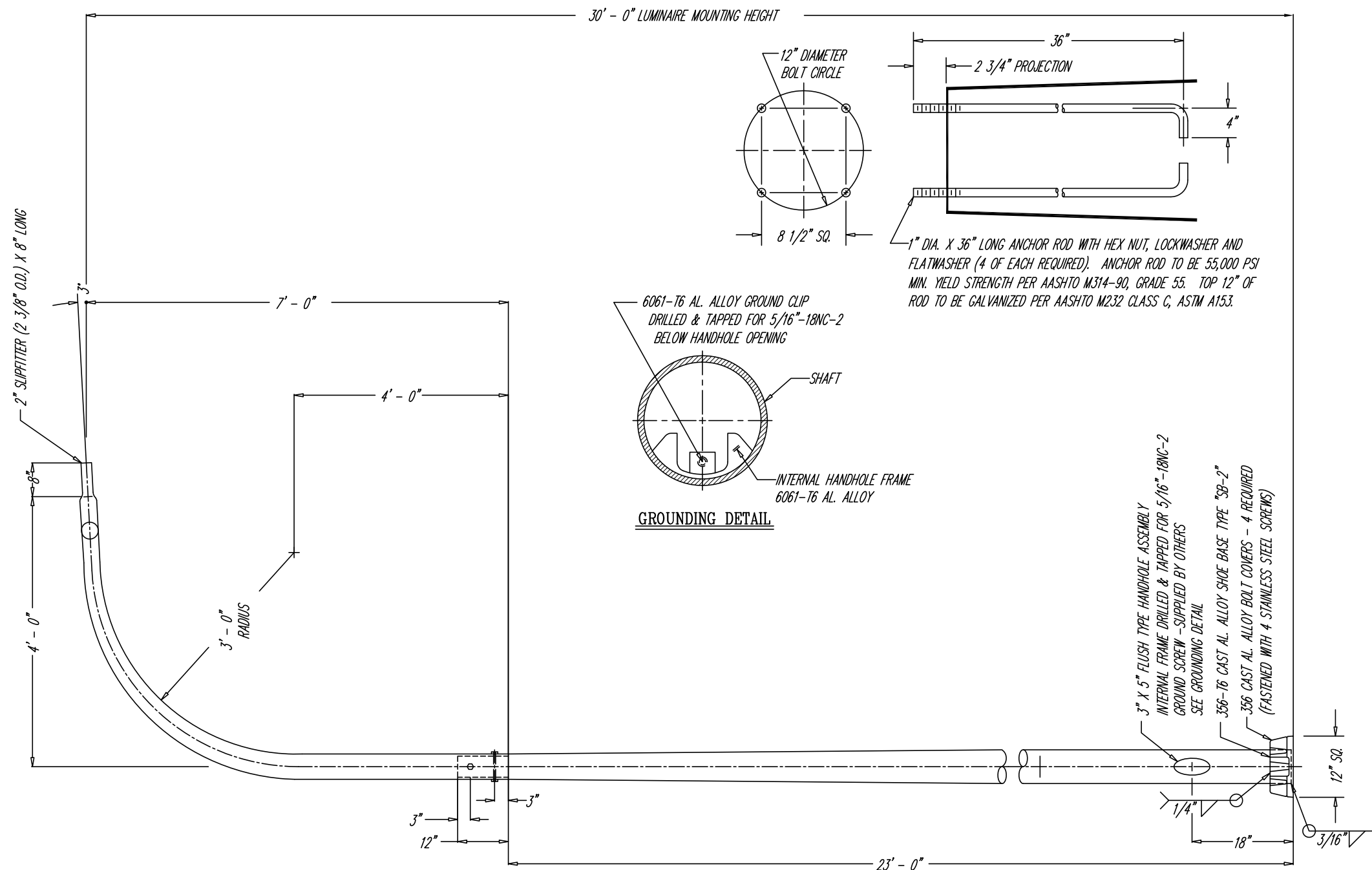
**Notes:**

Plans and Drawings are products as noted, and as recommended by the manufacturer. These Drawings may not represent the latest updates as provided by the manufacturer, so it is up to the contractors or vendors to submit shop drawings to the City Engineering Department for approval to insure conformance with these specifications.

**CITY OF NEW HAVEN  
DEPARTMENT OF ENGINEERING**

RICHARD H. MILLER, P.E., L.S. 9886  
CITY ENGINEER

DRIVE:	X:\ENGINEER\DWG\CITYSTD\
FILE:	DETAILS\LIGHTING STANDARDS\2011 DETAILS
DATE:	JULY 1, 2011
DRAWING NO.:	LD-NH-05



**NOTE:**

1. - USE 4043 WELD WIRE.
2. - 6063-T4 ASSEMBLY .375 WALL OR LESS TO BE HEAT-TREATED TO T6 TEMPER AFTER WELDING.
3. - AFTER INSTALLATION, WARRANTY APPLIES ONLY IF THE ASSEMBLY IS COMPLETE INCLUDING LUMINAIRE(S) AND WIRING.

REVISIONS					MATERIAL	
ALT.	DESCRIPTION	DATE	BY	CHK.	STOCK SIZE	TITLE
						RTA8M30AAD14
					FINISH OR TEMPER	DR. W.W.W. 11-23-09 DWG. NO.
						CHK. S.A.F. 11-23-09
						APP.
					CUSTOMER	10071
					NEW HAVEN, CT.	SCALE NONE

**CONTINUOUS ALUMINUM POLE ON FLAT BASE  
WITH INTEGRAL 4'-0" ARM**

NOT TO SCALE

**ALUMINUM POLE AND ARM**

AS NOTED