

This drawing is property of Spring City Elect. Mfg. and is issued to the recipient with the understanding that it shall not be copied, duplicated, passed on to unauthorized parties, nor used for any purpose other than that for which it is specifically furnished except with Spring City's written permission.

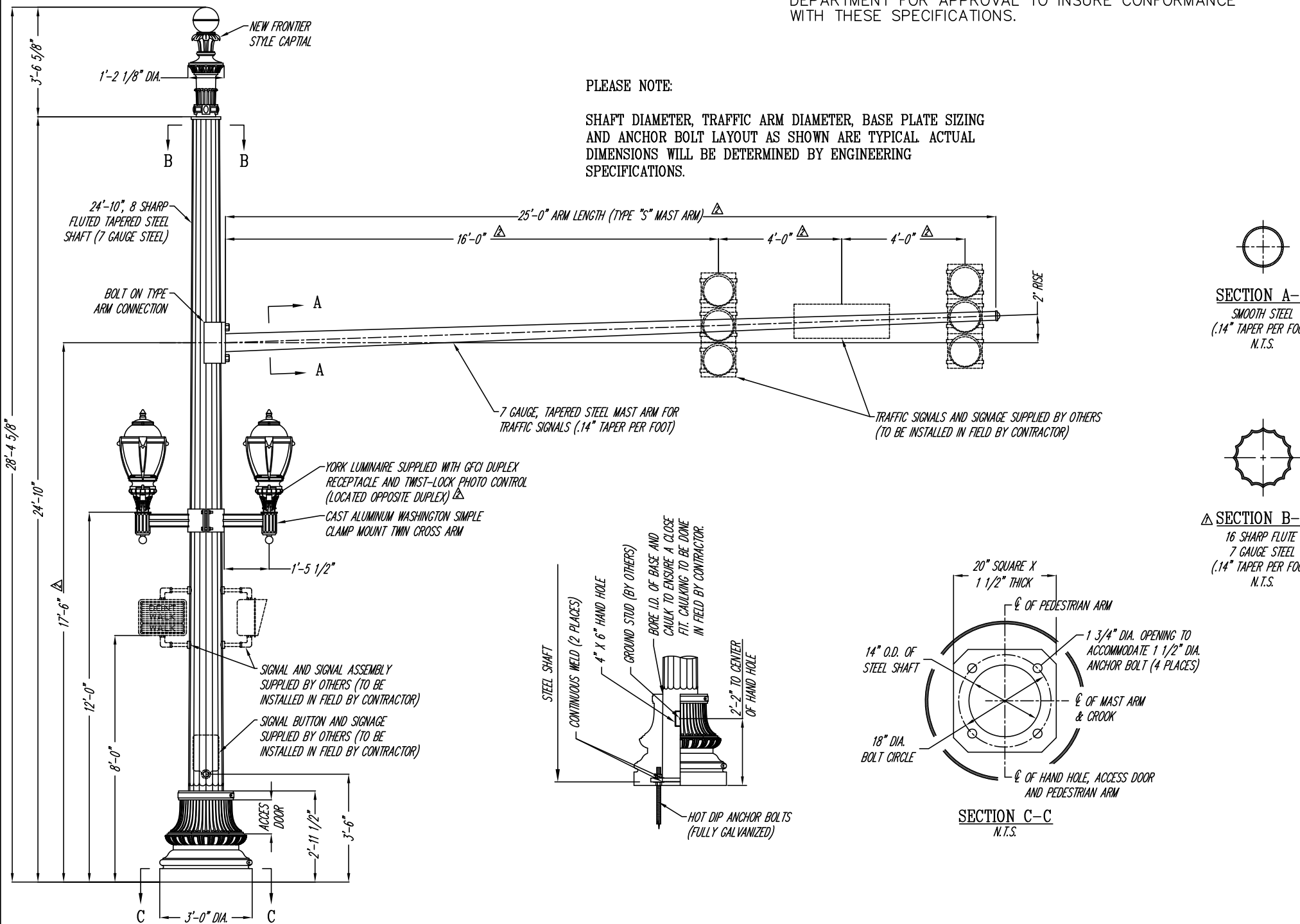
**NOTE TO CONTRACTORS AND VENDORS:**

CONDUIT AND WIRE SIZE MAY VARY DEPENDING ON PROJECT. IT IS UP TO THE CONTRACTORS OR VENDORS TO SUBMIT SHOP DRAWINGS TO THE CITY ENGINEERING DEPARTMENT FOR APPROVAL TO INSURE CONFORMANCE WITH THESE SPECIFICATIONS.

**CITY OF NEW HAVEN  
DEPARTMENT OF ENGINEERING**

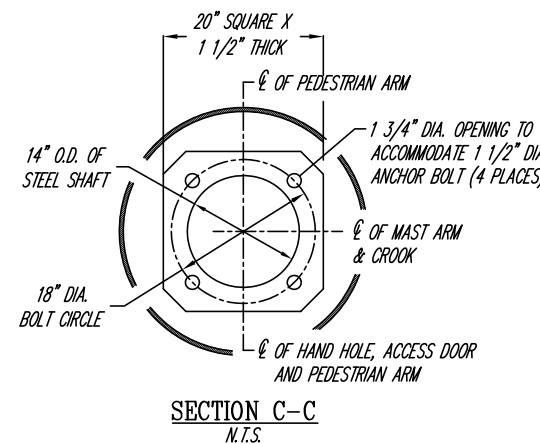
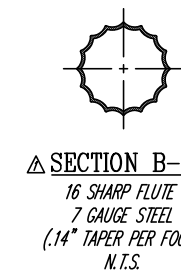
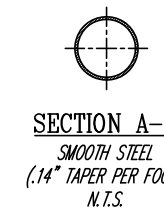
RICHARD H. MILLER, P.E., L.S. 9886  
CITY ENGINEER

DRIVE: K:\ENGINEER\DWG\CITYSTD  
FILE: DETAILS\LIGHTING STANDARDS\2011 DETAILS  
DATE: JULY 1, 2011  
DRAWING NO.: LD-NH-33



**PLEASE NOTE:**

SHAFT DIAMETER, TRAFFIC ARM DIAMETER, BASE PLATE SIZING AND ANCHOR BOLT LAYOUT AS SHOWN ARE TYPICAL. ACTUAL DIMENSIONS WILL BE DETERMINED BY ENGINEERING SPECIFICATIONS.



**PEDESTRIAN LUMINAIRE SPECIFICATIONS**

STYLE:	YORK
HEIGHT:	39 1/2"
WIDTH:	20"
MATERIAL:	SPUN ALUMINUM AND CAST ALUMINUM
GLOBE:	UV STABILIZED RIPPLED ACRYLIC
FINISH:	FINISH PAINTED BLACK
LAMPING:	150 WATT METAL HALIDE (LAMP BY OTHERS)
VOLTAGE:	120 VOLT
SOCKET:	MOGUL BASE
REFLECTOR:	SEGMENTED ALUMINUM REFLECTOR
ELECTRICAL:	GFCI DUPLEX RECEPTACLE TWIST-LOCK PHOTO CONTROL

**CLAMP MOUNT ARM SPECIFICATIONS**

STYLE:	WASHINGTON SIMPLE (CLAMP MOUNT TWIN)
HEIGHT:	12 1/4"
WIDTH:	1'-5 1/2" FROM CLAMP TO E OF LUMINAIRE
MATERIAL:	CAST ALUMINUM
FINISH:	PRIME PAINT THEN FINISH PAINT, SHERWIN WILLIAMS ACROLON - CLASSIC BLACK
TENON:	3" DIA. X 3 1/2" HIGH

**SIGNAL POST SPECIFICATIONS**


STYLE:	WASHINGTON STEEL WITH SINGLE MAST ARM
HEIGHT:	24'-10"
BASE:	36" DIAMETER
MATERIAL:	STEEL SHAFT: 7 GAUGE, 16 SHARP FLUTE STEEL MONOTUBE CONSTRUCTION TRAFFIC ARM: SMOOTH TAPERED STEEL MONOTUBE CONSTRUCTION BASE: TWO PIECE, (WRAP AROUND) CAST DUCTILE IRON PER A.S.T.M. A536-84, GRADE 65-45-12
FINISH:	PRIME PAINT THEN FINISH PAINT, SHERWIN WILLIAMS ACROLON - CLASSIC BLACK
ACCESS DOOR:	LOCATED IN BASE SECURED WITH TAMPER PROOF HEX SOCKET SECURITY MACHINE SCREWS
GROUND PROVISIONS:	1/4"-20 SQUARE NUT FOR GROUND STUD WELDED TO INSIDE OF STEEL SHAFT OPPOSITE ACCESS DOOR TO COINCIDE WITH HAND HOLE (GROUND STUD BY OTHERS)
ANCHOR BOLTS:	(4) 1" DIA. X 30" + 4" HOOK (FULLY GALVANIZED WITH 2 GALVANIZED WASHERS AND 2 GALVANIZED NUTS PER BOLT)
BOLT PROJECTION:	5" REQUIRED

**THE WASHINGTON 24'-10" STEEL POST WITH  
25'-0" TRAFFIC SIGNAL MAST ARM**

NOT TO SCALE

**STEEL POSTS AND SIGNAL MAST ARM**

AS NOTED

REVISOR: B.K.R.	DATE: 04-08-11
REVISOR: B.K.R.	DATE: 03-21-11
 <b>Spring City Electrical Mfg. Co.</b> HALL AND MAIN STREETS - P.O. BOX 19 - SPRING CITY, PA. 19475 PHONE (610) 948-4000 - FAX (610) 948-5577 - WWW.SPRINGCITY.COM	
DESCRIPTION	THE WASHINGTON 24'-10" STEEL POST WITH 25'-0" TRAFFIC SIGNAL MAST ARM
CUSTOMER	NEW HAVEN, CT
SCALE	N.T.S.
DRAWN BY:	B.K.R.
DATE	03-10-11
SPEC. NO.	S102007C