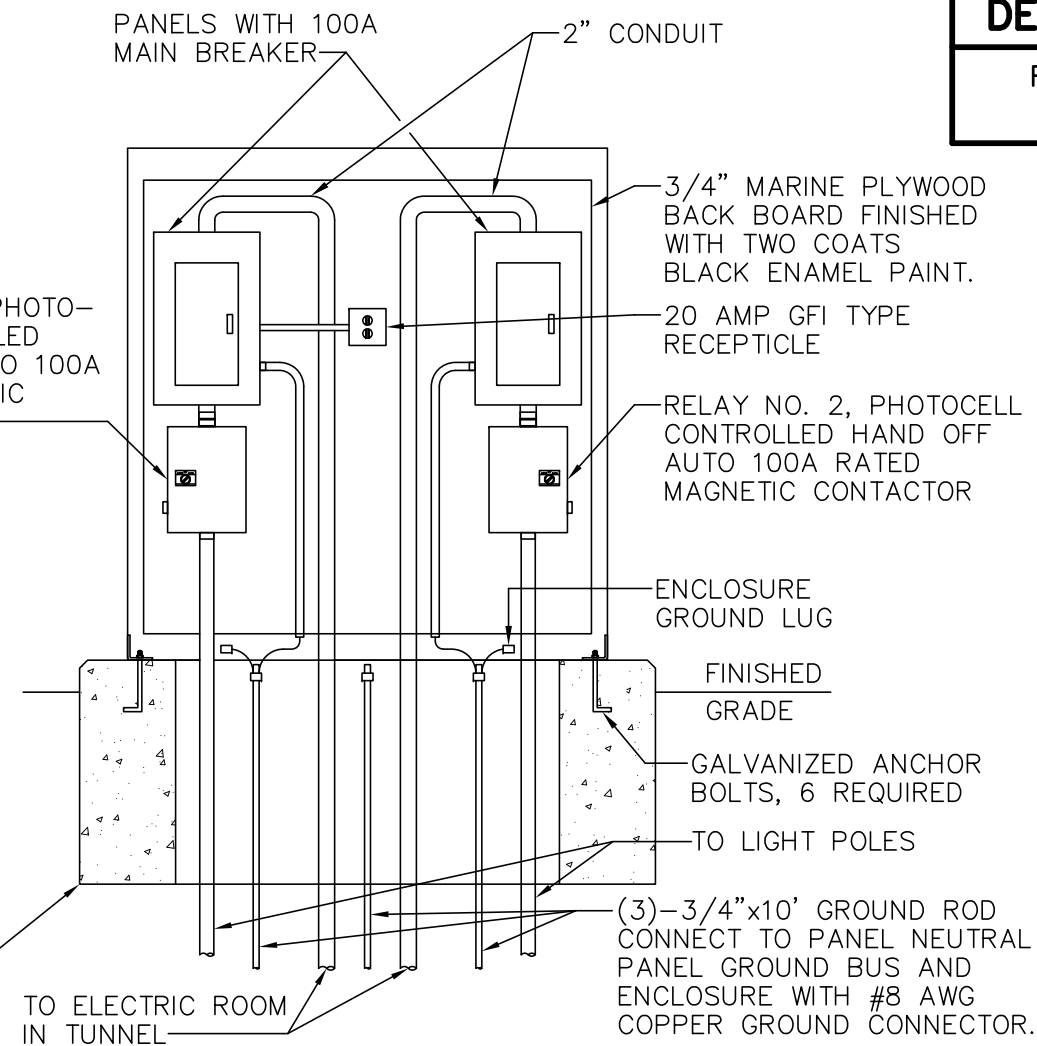


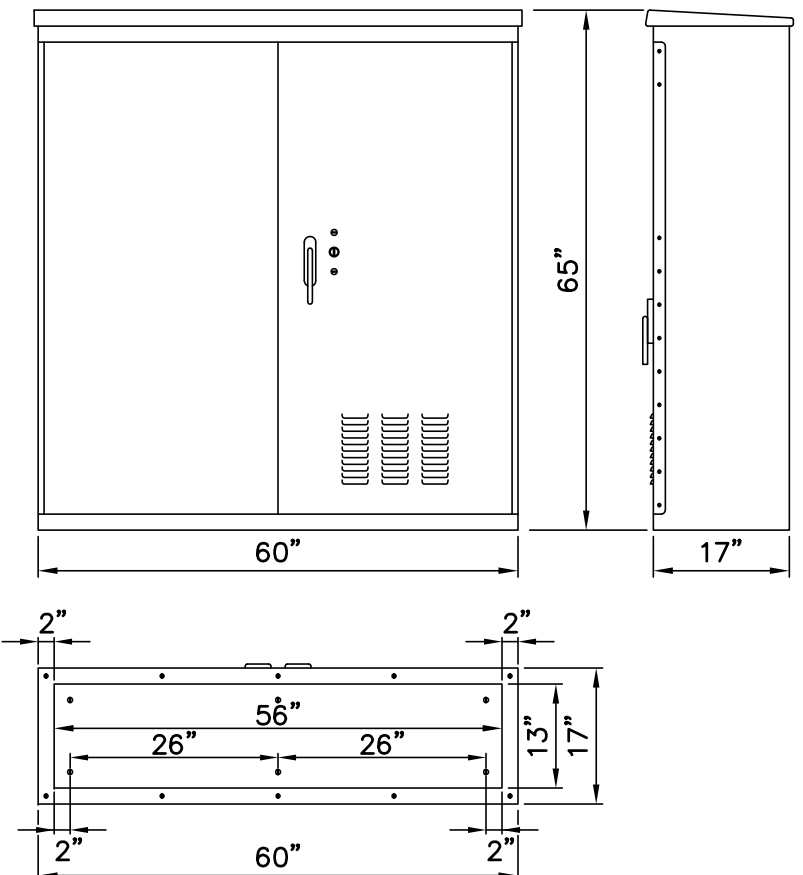
**EXTERIOR ELEVATION**

NOTE:  
 OVERALL CONCRETE PAD  
 DEPTH = 24". ALLOW 2'-0"  
 IN FRONT AND 6" AT REAR  
 OF PAD.



**INTERIOR ELEVATION**

NOTE:  
 \*SERVICE SIZE MAY VARY DEPENDING ON LOCATION  
 AND LOAD REQUIRED.  
 TO BE DETERMINED BY CITY OF NEW HAVEN  
 LIGHTING MANAGER.



**NOTE TO CONTRACTORS AND VENDORS:**  
 CONDUIT AND WIRE SIZE MAY VARY DEPENDING ON  
 PROJECT. IT IS UP TO THE CONTRACTORS OR VENDORS  
 TO SUBMIT SHOP DRAWINGS TO THE CITY ENGINEERING  
 DEPARTMENT FOR APPROVAL TO INSURE CONFORMANCE  
 WITH THESE SPECIFICATIONS.

## **MASS ELECTRICAL APPARATUS OR EQUAL TWO DOOR ELECTRICAL CABINET**

NOT TO SCALE

**NOTES:**

1. THE CABINET AND DOOR SHALL BE CONSTRUCTED FROM 5052-H32 SHEET ALUMINUM ALLOY WHICH HAS THICKNESS OF 0.125 INCH...
2. THE ENCLOSURE WILL MEET OR EXCEED THE REQUIREMENTS OF NEMA 3R RATING.
3. THE CABINET SHALL BE DESIGNED WITH A SLOPPED TOP TO PREVENT THE ACCUMULATION OF WATER ON ITS TOP SURFACE.
4. VENTILATION SHAL BE PROVIDED WITH LOUVERED VENTS ON ROOF AND IN THE FRONT DOOR CABINET WITH A REMOVABLE AIR FILTER. LOUVERS SHALL SATISFY THE NEMA ROD ENTRY TEST FOR 3R VENTILATED ENCLOSURES.
5. PAD MOUNTED ENCLOSURE WITH OPEN BOTTOM (SEE DETAIL).
6. THE DOOR OPENING SHALL BE DOUBLE FLANGED ON ALL FOUR (4) SIDES WHICH INCREASE STRENGTH AROUND OPENINGS.
7. DOUBLE DOOR DESIGN :  
 A) WITH CAPTIVE DOOR RESTRAINT AND CORBIN LOCK  
 B) THE DOOR OPENING WILL A MINIMUM OF 80% OF THE FRONT SURFACE AREA. DOUBLE DOORS WILL OVERLAP AND UTILIZE A REMOVABLE CENTER POST.  
 C) HINGES SHALL BE CONTINUOUS AND BOLTED TO CABINET AND DOOR UTILIZING 1/4-20 STAINLESS STEEL CARRIAGE BOLTS AND NYLOCK NUTS
- D) STAINLESS STEEL PADLOCK LATCHING MECHANISM SHALL BE A 3 POINT DRAW ROLLER WITH NYLON ROLLERS AT TOP AND BOTTOM.
- E) THE DOORS SHALL BE FINISHED WITH A GASKET AND SHALL FORM A WEATHERTIGHT SEAL BETWEEN THE CABINET DOOR.
8. 3/4" PLYWOOD BACK PANEL PAINTED BLACK AND TREATED WITH CLEAR POLYURETHANE.
9. CABINET FINISH SHALL HAVE A SMOOTH SUBSTANTIALLY FREE OF FLOW LINES.
10. U.L. LISTED.