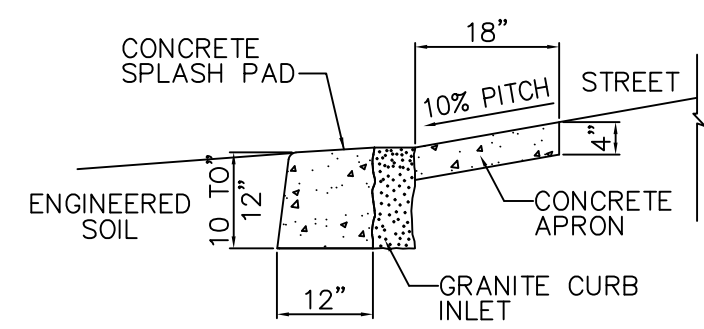


PLAN

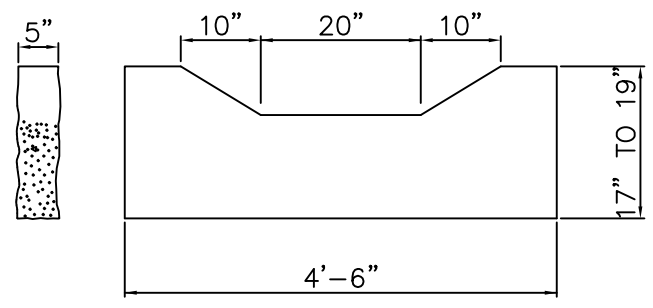


SECTION A-A

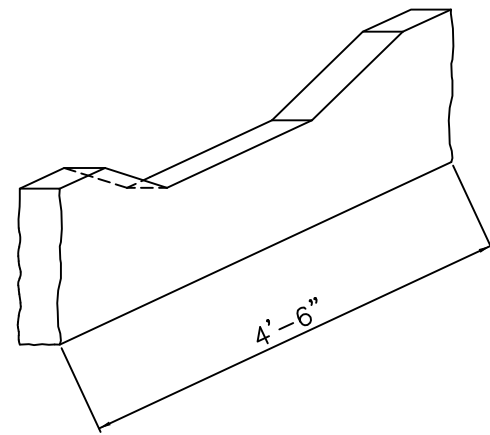
BIOSWALE INLET DETAIL

SCALE: 1/2"=1'-0"

- NOTE:**
1. CURB HEIGHTS VARY. CONCRETE SPLASH PAD TO BE Poured FROM STREET LEVEL TO THE BOTTOM OF THE CURB. NO EXCESS CONCRETE TO BE PLACED WITHIN BIOSWALE FOOTPRINT.
 2. TRANSITION FROM CONCRETE APRON TO CURB INLET TO SPLASH PAD, IS TO BE FLUSH.
 3. IF STREET CURBING IS MADE OF BLUESTONE, CONCRETE OR ANY OTHER MATERIAL OUTSIDE OF GRANITE, THEN CONTACT ENGINEERING DEPARTMENT TO DISCUSS BIOSWALE INLET INSTALLATION.



ELEVATION



PERSPECTIVE

GRANITE CURB INLET DETAIL

SCALE: 1/2"=1'-0"

- NOTE:**
- GRANITE CURB INLET CAN BE CUT IN PLACE OR INSTALLED AS A PRE-CUT SECTION OF GRANITE CURB. PRE-CUT SECTIONS MUST BE A SINGLE LENGTH OF GRANITE CURB.

BIOSWALE INLET DETAILS

SCALE: AS NOTED