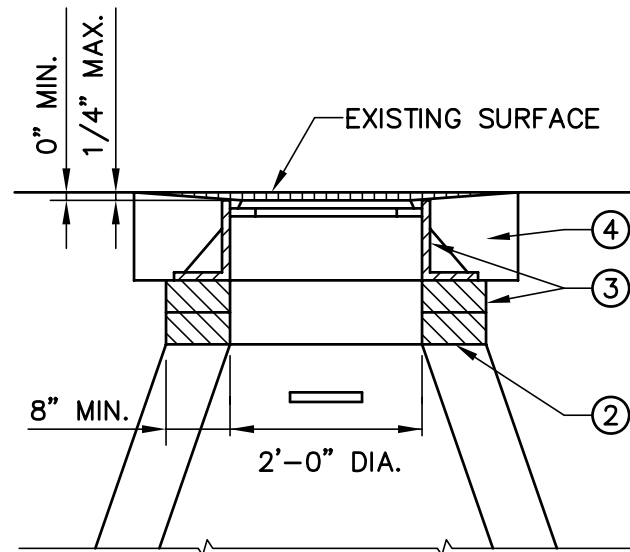


PLAN



SECTION

1. CUT AND REMOVE EXISTING PAVEMENT TO NEAT LINES AS SHOWN OR AS DIRECTED. REMOVE BITUMINOUS CONCRETE FROM MANHOLE FRAME AND COVERS.
2. REMOVE AND REPLACE EXISTING MORTAR AND MASONRY WHICH IS LOOSE, DETERIORATED OR UNSOUND AS DIRECTED BY THE ENGINEER.
3. SET MANHOLE FRAME TO REQUIRED GRADE WITH BRICK, OR CONCRETE BLOCK OR REINFORCED CONCRETE GRADING RING. MASONRY AND MANHOLE FRAMES ARE TO BE SET IN FULL MORTAR BEDS.
4. REPLACE PAVEMENT WITH 3" BITUMINOUS CONCRETE CLASS 1 LAID IN TWO COURSES ON 6" BITUMINOUS CLASS 4 ON TAMPED GRAVEL BASE CONFORMING TO CONN. DOT SPECIFICATIONS FOR ROAD, BRIDGES AND INCIDENTAL CONSTRUCTION. SEAL PAVEMENT JOINT WITH ASPHALT.
5. CONTRACTOR TO FURNISH NEW MANHOLE FRAMES AND COVERS AS REQUIRED.
6. EXISTING MANHOLE FRAMES AND COVERS TO BE DISPOSED OF AS DIRECTED BY THE ENGINEER.
7. PERMITS MUST BE OBTAINED FROM BOTH THE CITY AND THE STATE. THE CITY WILL ISSUE A "NO FEE" PERMIT.
8. INSPECTION OF WORK MAY BE MADE BY BOTH THE CITY AND THE STATE.
9. LOCATION OF WORK IS CITY WIDE.

**REPLACING SANITARY MANHOLE CASTINGS**

SCALE:  $\frac{1}{2}$ "=1'-0"