

**CITY OF NEW HAVEN
DEPARTMENT OF ENGINEERING**

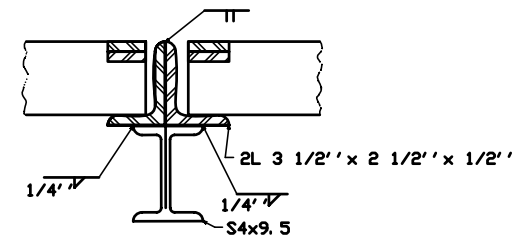
RICHARD H. MILLER, P.E., L.S. 9886
CITY ENGINEER

DRIVE: K:\ENGINEER\DWG
FILE: CITYSTD\DETAILS\2009 DETAILS
DATE: DEC. 1, 2009
DRAWING NO.: **STD-NH-08D**

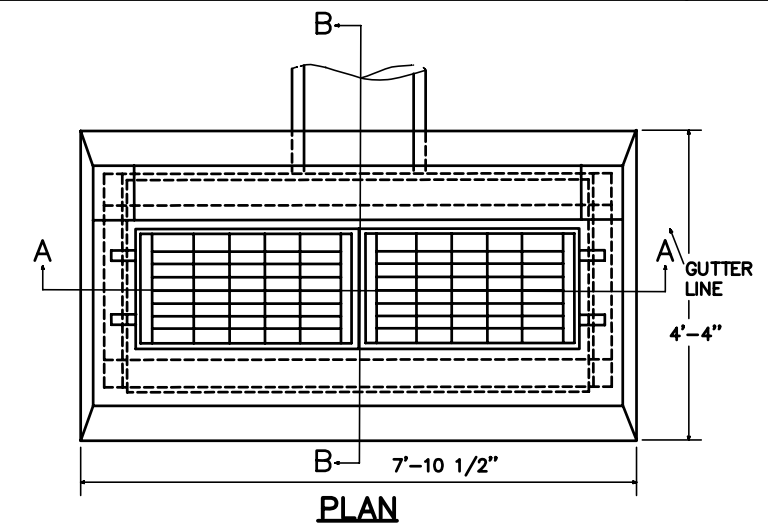
NOTES

FOR DETAILS OF STEEL FRAME & GRATE SEE STANDARD SHEET NO. 507-K OR 507-L TWO FRAMES & GRATES REQUIRED FOR EACH CATCH BASIN.
WALLS OF ALL CATCH BASINS OVER 10 FT. DEEP TO BE INCREASED TO 12" THICKNESS, INSIDE DIMENSIONS TO REMAIN THE SAME.
ALL STEEL, EXCEPT REINFORCING BARS, SHALL BE GALVANIZED IN ACCORDANCE WITH M.06.03.

ALL BARS SHALL HAVE 2" COVER.
ALL STRAIGHT REINF. BARS WILL BE #4 BARS.
ALL STIRRUPS WILL BE #3 BARS 9" C.C. TYP.

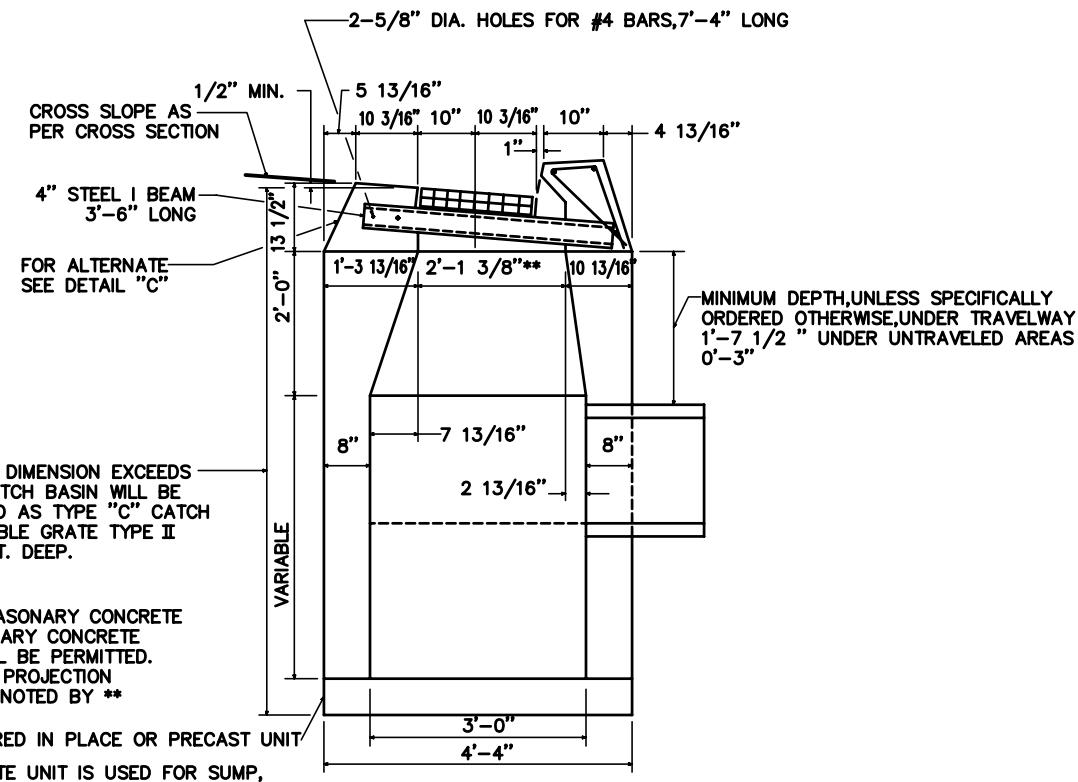


DETAIL "A"



PLAN

NOTE: WHEN CATCH BASIN IS SET IN CONCRETE PAVEMENT THE 1/2" SLOPE ON THE TOP SURFACE SHALL BE CHANGED TO MATCH ADJOINING PAVEMENT.

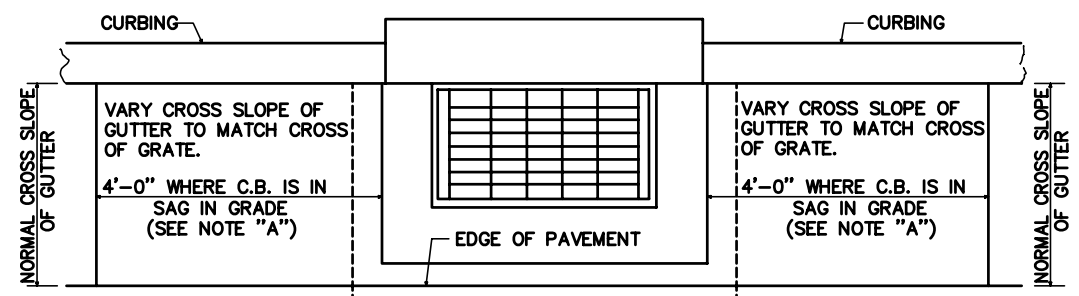


SECTION B-B

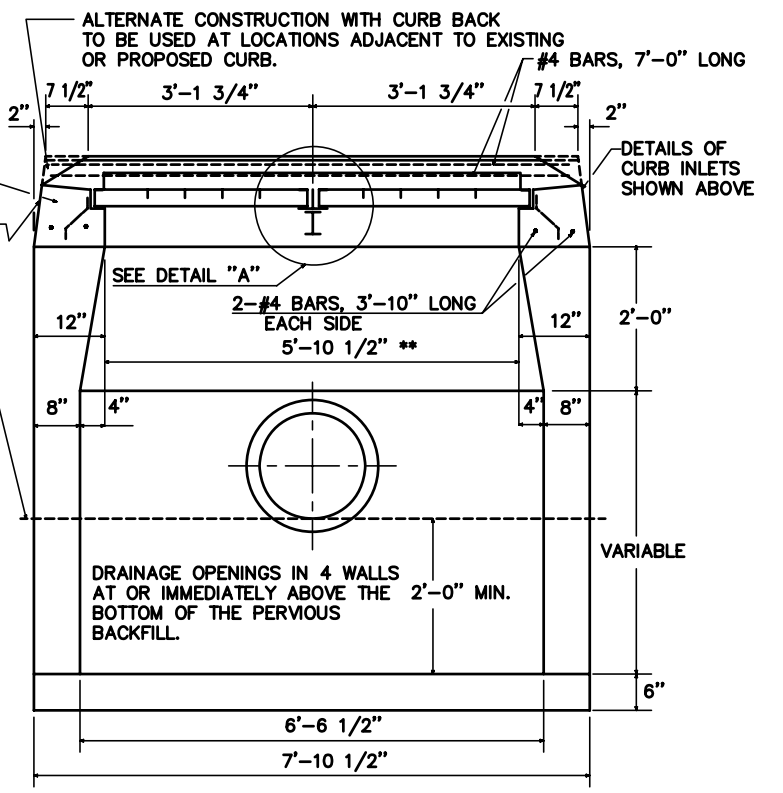
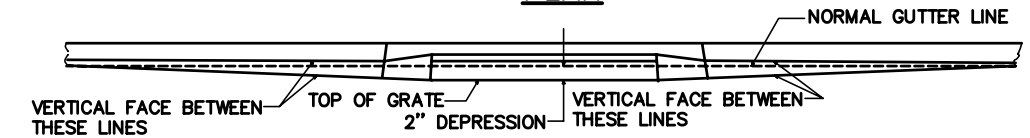
PRECAST CONCRETE UNITS, BRICK, CLASS "A" CONCRETE, MASONRY CONCRETE UNITS. WHERE BRICK OR MASONRY CONCRETE UNITS ARE USED, CORBELLING WILL BE PERMITTED. MAXIMUM CORBEL TO BE 3". NO PROJECTION SHALL EXTEND INSIDE OF LIMITS NOTED BY **

CLASS "A" CONCRETE POURED IN PLACE OR PRECAST UNIT

WHERE PRECAST CONCRETE UNIT IS USED FOR SUMP, THE TOP OF THE UNIT SHALL BE AT LEAST 6" BELOW THE BOTTOM OF THE PIPE OUTLET FROM THE CATCH BASIN.



PLAN



SECTION A-A

PERVIOUS BACKFILL ABOVE THIS ELEVATION, MAX. DEPTH 3'-0" BELOW THE TOP OF THE STRUCTURE.

TYPE "C-L" CATCH BASIN DOUBLE GRATE - TYPE II

SCALE: 3/8" = 1'-0"