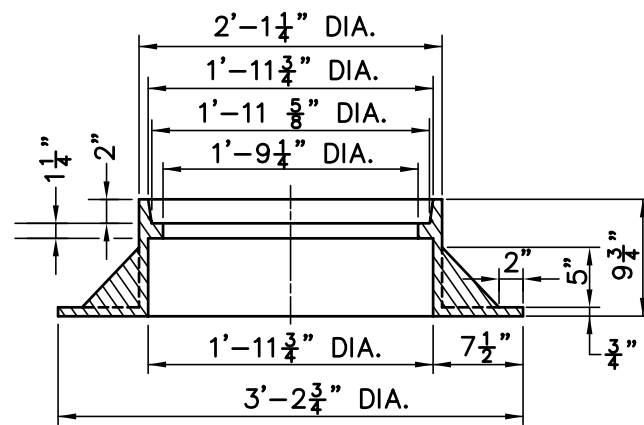


PLAN



SECTION A-A

STANDARD MANHOLE FRAME

SCALE: $\frac{3}{4}'' = 1'-0''$

GENERAL NOTES

CAST IRON CATCH BASIN FRAME & MANHOLE FRAMES & COVERS - CAST IRON SHALL CONFORM TO AMERICAN SOCIETY OF TESTING MATERIALS (ASTM) STANDARD SPECIFICATION FOR GREY IRON CASTINGS, ASTM DESIGNATION A 48 CLASS 25 B FOR FRAMES & 30 B FOR COVERS. CASTINGS SHALL BE BOLDLY FILLETED AT ANGLES AND THE ARRISES SHALL BE SHARP AND PERFECT. THEY SHALL BE TRUE TO PATTERN IN FORM AND DIMENSIONS, FREE FROM POURING FAULTS, SPONGINESS, CRACKS BLOWHOLES AND OTHER DEFECTS IN POSITIONS AFFECTING THEIR STRENGTH AND VALUE FOR THE SERVICE INTENDED. CASTINGS SHALL BE SAND BLASTED OR OTHERWISE EFFECTIVELY CLEANED OF SAND AND SCALE, SO AS TO PRESENT A SMOOTH, CLEAN AND UNIFORM SURFACE BEFORE INSPECTION. THE FOLLOWING PORTIONS OF THE COVERS AND FRAMES SHALL BE MACHINED: FRAME - HORIZONTAL SURFACE TO RECEIVE THE COVER; COVER - UNDER SURFACE WHICH RESTS ON FRAME. AFTER MACHINING, IT SHALL NOT BE POSSIBLE TO ROCK ANY COVER WHEN IT IS SEATED IN ANY POSITION IN ITS ASSOCIATED FRAME. MANUFACTURER'S NAME AND CATALOG NUMBER MUST BE CAST ON EACH FRAME AND COVER. NO FRAME AND COVER SHALL WEIGH LESS THAN 90% OF WEIGHT INDICATED BELOW.

CATCH BASIN FRAMES SHALL BE CAST IN SUBSTANTIAL PERMANENT STEEL FORMS, SO CONSTRUCTED THAT NO OVERALL DIMENSION OF A CASTING SHALL VARY MORE THAN ONE-QUARTER INCH OVER OR UNDER THE SPECIFIED DIMENSION, AND SO THAT THE FRAME FOR THE INLET GRATE IS IN THE DESIRED POSITION IN THE COMPLETED UNIT. SUITABLE PROVISION SHALL BE MADE IN PRECASTING THE UNITS FOR CONVENIENT HANDLING OF THE COMPLETED UNIT AND ADDITIONAL REINFORCEMENT STEEL SHALL BE PROVIDED TO ALLOW FOR SUCH HANDLING. PRECAST UNITS SHALL BE CURED IN ACCORDANCE WITH AASHO M-170. STEEL GRATES SHALL BE GALVANIZED IN ACCORDANCE WITH CONNECTICUT DEPARTMENT OF TRANSPORTATION SPECIFICATION FORM 814, SECTION M.06.03.

WEIGHT:

FRAME	360 lbs.
COVER	160 lbs.
TOTAL (MIN.)	520 lbs.

CATCH BASIN AND MANHOLE FRAMES, GRATES AND COVERS SHALL BE AS MFG. BY CAMPBELL FOUNDRY CO., OR APPROVED EQUAL.