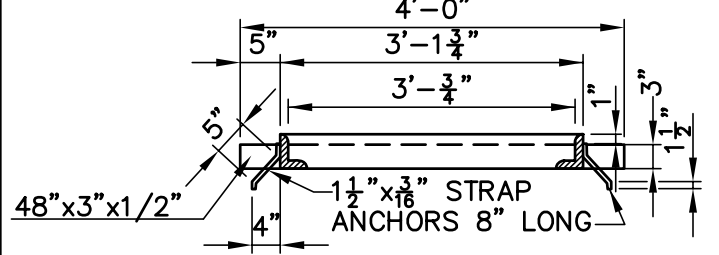
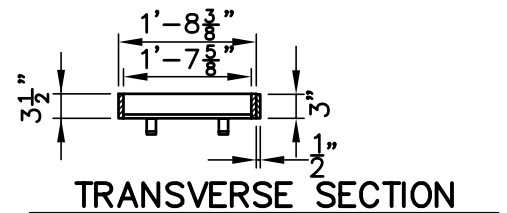


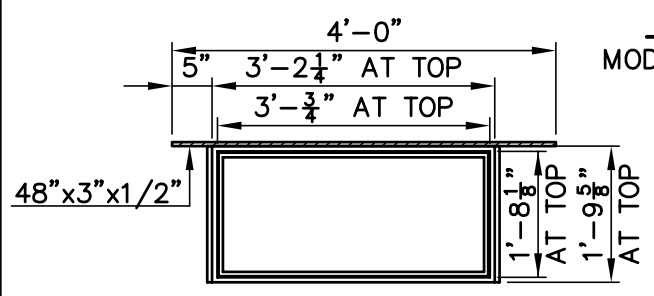
PLAN



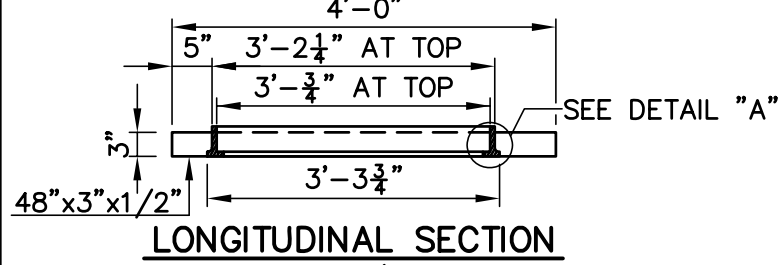
LONGITUDINAL SECTION



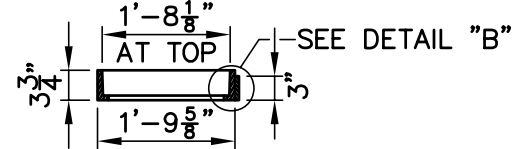
TRANSVERSE SECTION



PLAN



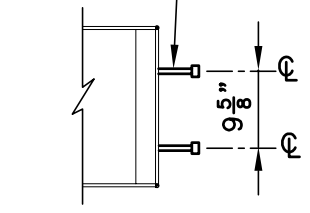
LONGITUDINAL SECTION



TRANSVERSE SECTION

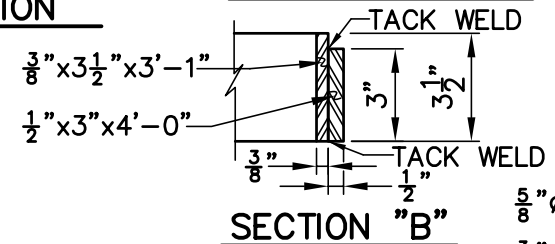
CAST IRON FRAME ALTERNATE

MODIFIED TO FIT OLD STYLE GRANITE CURB INLET



STUD ANCHOR

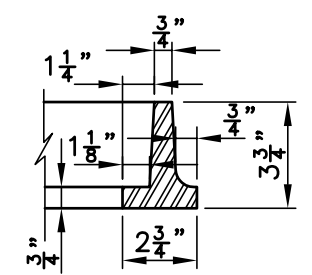
ALTERNATE



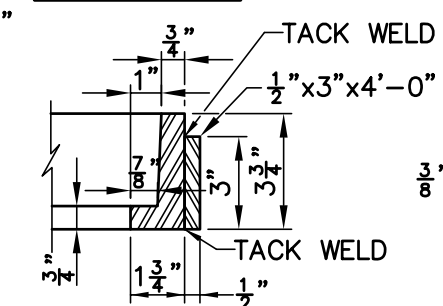
SECTION "B"

STEEL FRAME

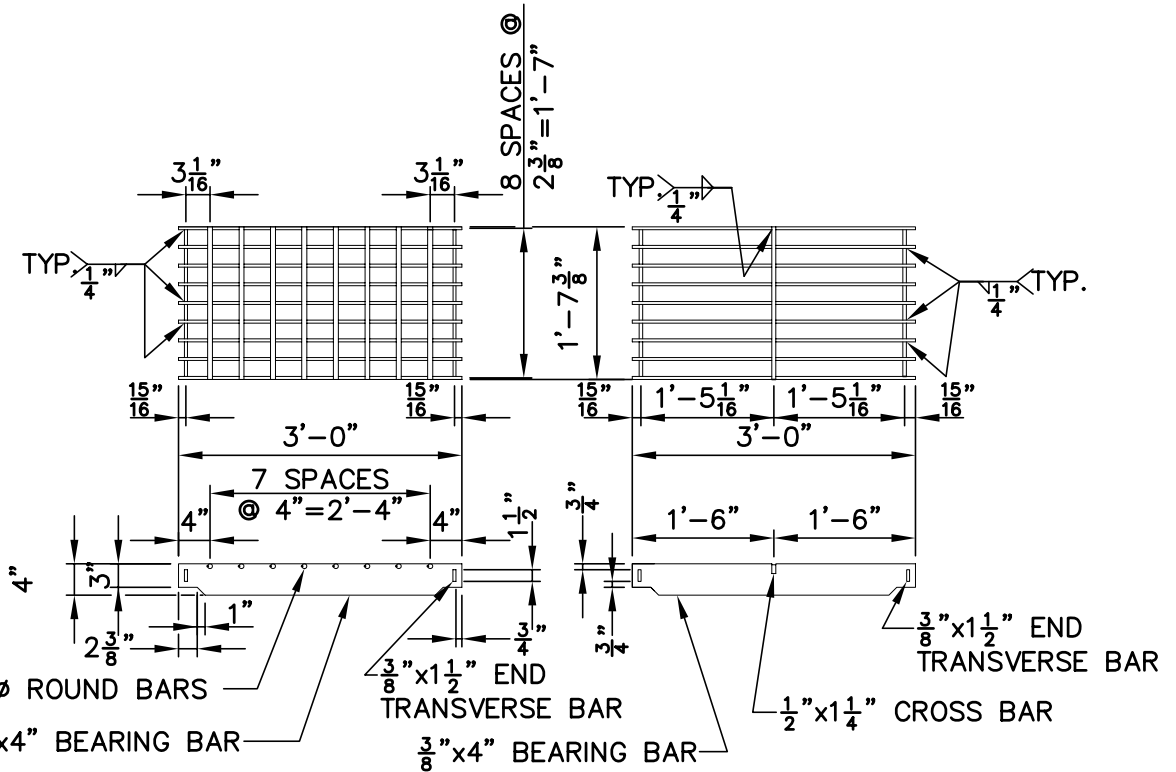
MODIFIED TO FIT OLD STYLE GRANITE CURB INLET



DETAIL "A"

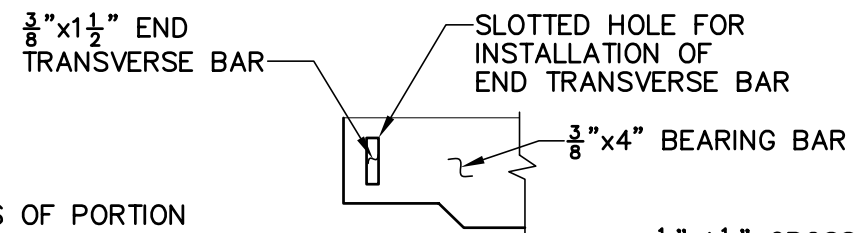


DETAIL "B"

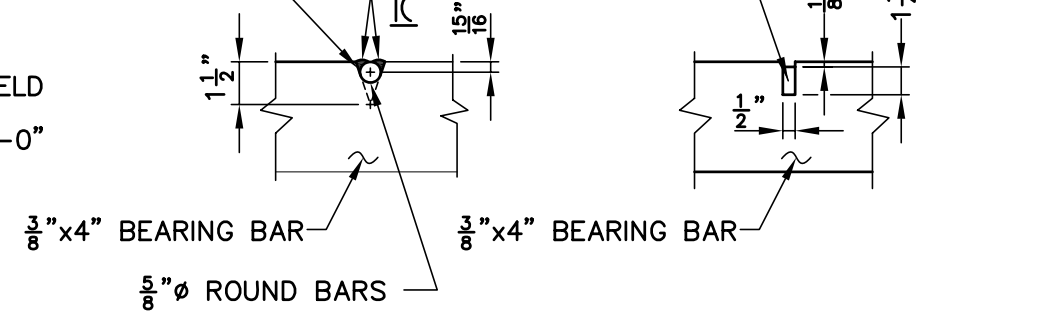


TYPE A

TYPE B



LIMITS OF PORTION OF BEARING BAR TO BE REMOVED



GRATES

MODIFIED CATCH BASIN FRAME AND GRATE

NOT TO SCALE

NOTES:

GENERAL

STEEL OR CAST IRON FRAMES TO BE USED FOR TYPE "A" & "B" GRATES.

TYPE "A" GRATES TO BE USED ON ALL ROADWAYS WHERE BICYCLE TRAFFIC IS ALLOWED OR AS DIRECTED BY THE ENGINEER.

TYPE "B" GRATES TO BE USED ON ALL LIMITED ACCESS HIGHWAYS, RAMPS AND WHERE BICYCLE TRAFFIC IS NOT ALLOWED OR AS DIRECTED BY THE ENGINEER. STEEL FRAMES AND GRATES SHALL BE GALVANIZED IN ACCORDANCE WITH M.06.03.

CAST IRON FRAMES AND GRATES ARE NOT TO BE GALVANIZED.

STEEL

ALL METAL UNITS SUBJECT TO MANUFACTURING TOLERANCES.

ONLY LOW HYDROGEN ELECTRODES SHALL BE USED.

DIMENSIONAL TOLERANCES MAY BE ±1/16".

WELDING WILL BE PERFORMED IN ACCORDANCE WITH THE STANDARD SPECIFICATIONS FOR ROADS, BRIDGES AND INCIDENTAL CONSTRUCTION.