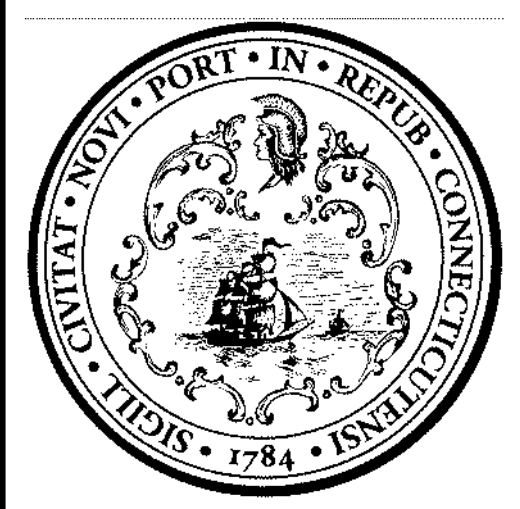


C:\USERS\CHRIS FLANAGAN\CITY OF NEW HAVEN, CT\ENGINEERING DEPARTMENT - DOCUMENTS (1)\PROJECTS\18-136-01 QUINNIPIAC AVE\DRAWINGS\SHEET\18-136-C-SPM.DWG



LEGEND			
	CONCRETE SIDEWALK		12" STORM R.C.P.
	CONCRETE DRIVEWAY		RETAINING WALL
	GRANITE CURB		DETECTABLE WARNING PAD
	TYPE 'C' CATCH BASIN		TYPE 'C-L' CATCH BASIN
	BIOSWALE		CONVERT CB TO MANHOLE



No.	Revision/Issue	Date



CITY OF NEW HAVEN
 DEPARTMENT OF ENGINEERING
 THE HONORABLE JUSTIN M. ELICKER, MAYOR
 GIOVANNI ZINN, P.E., CITY ENGINEER

Project Name and Address
QUINNIPIAC AVENUE MAJOR CORRIDOR IMPROVEMENTS

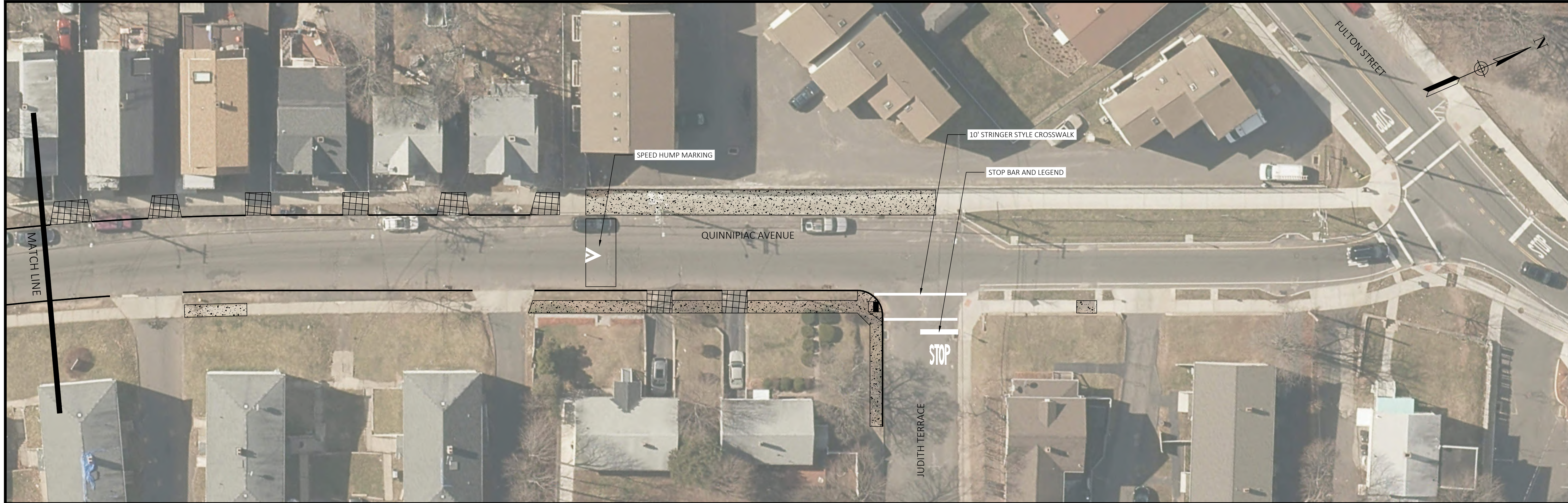
Drawn By	AW, CF
Designed By	AW, CF
Date	1/30/2024
Project Number	L092-0006

Professional Seal

Sheet Title
 SIGNING AND PAVEMENT MARKING PLAN

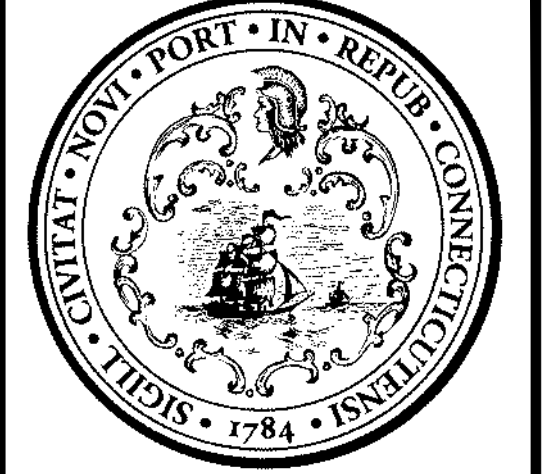
Sheet Number
SPM-1

C:\USERS\CHRIS FLANAGAN\CITY OF NEW HAVEN, CT\ENGINEERING DEPARTMENT - DOCUMENTS (1)\PROJECTS\18-136-01 QUINNIPIAC AVE\DRAWINGS\SHEET\18-136-C-SPM.DWG



LEGEND

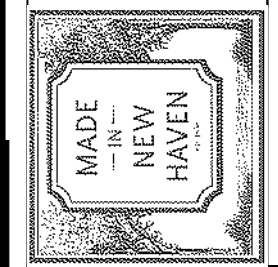
- CONCRETE SIDEWALK
- CONCRETE DRIVEWAY
- GRANITE CURB
- 12" STORM R.C.P.
- RETAINING WALL
- DETECTABLE WARNING PAD
- TYPE 'C' CATCH BASIN
- TYPE 'C-L' CATCH BASIN
- CONVERT CB TO MANHOLE
- BIOSWALE



No.	Revision/Issue	Date



CITY OF NEW HAVEN
DEPARTMENT OF ENGINEERING



THE HONORABLE JUSTIN M. ELICKER, MAYOR
GIOVANNI ZINN, P.E., CITY ENGINEER

Project Name and Address
QUINNIPIAC AVENUE MAJOR CORRIDOR IMPROVEMENTS

Drawn By: AW, CF
Designed By: AW, CF
Date: 1/30/2024
Project Number: L092-0006

Professional Seal

Sheet Title: SIGNING AND PAVEMENT MARKING PLAN
Sheet Number

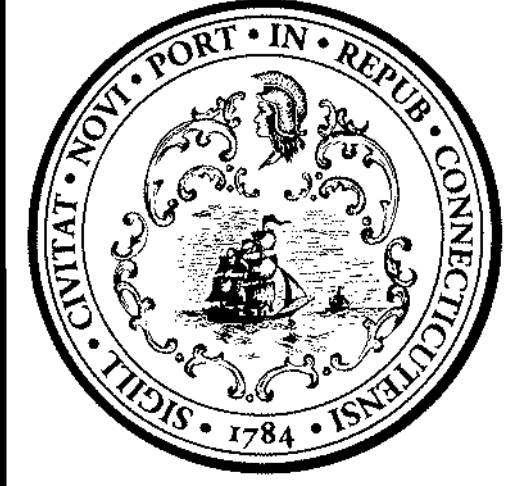
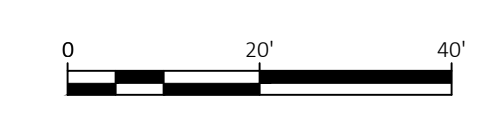
SPM-2

C:\USERS\CHRIS FLANAGAN\CITY OF NEW HAVEN, CT\ENGINEERING DEPARTMENT - DOCUMENTS (1)\PROJECTS\18-136-01 QUINNIPIAC AVE\DRAWINGS\SHEET\18-136-C-SPM.DWG




LEGEND

	CONCRETE SIDEWALK		12" STORM R.C.P.		TYPE 'C' CATCH BASIN		BIOSWALE
	CONCRETE DRIVEWAY		RETAINING WALL		TYPE 'C-L' CATCH BASIN		DETECTABLE WARNING PAD
	GRANITE CURB		CONVERT CB TO MANHOLE				



No.	Revision/Issue	Date


 CITY OF NEW HAVEN
 DEPARTMENT OF ENGINEERING
 THE HONORABLE JUSTIN M. ELICKER, MAYOR
 GIOVANNI ZINN, P.E., CITY ENGINEER

Project Name and Address
QUINNIPIAC AVENUE MAJOR CORRIDOR IMPROVEMENTS

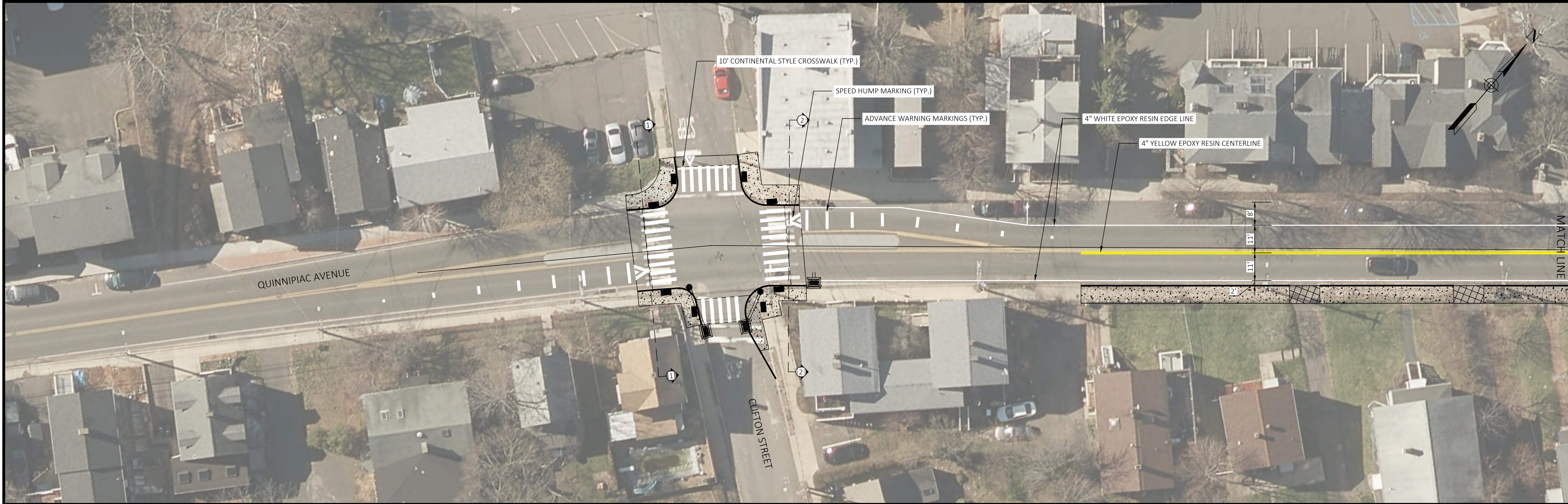
Drawn By: AW, CF
 Designed By: AW, CF
 Date: 1/30/2024
 Project Number: L092-0006

Professional Seal




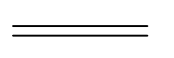
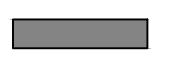




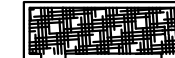
Sheet Title: SIGNING AND PAVEMENT MARKING PLAN
 Sheet Number:

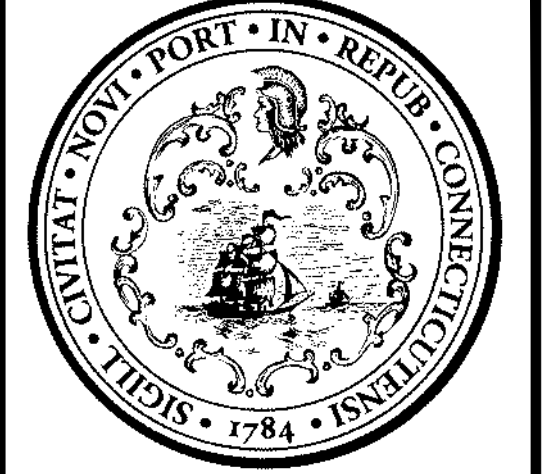
SPM-3

C:\USERS\CHRIS FLANAGAN\CITY OF NEW HAVEN, CT\ENGINEERING DEPARTMENT - DOCUMENTS (1)\PROJECTS\18-136-01 QUINNIPIAC AVE\DRAWINGS\SHEET\18-136-C-SPM.DWG



LEGEND

-  CONCRETE SIDEWALK
-  CONCRETE DRIVEWAY
-  GRANITE CURB
-  12" STORM R.C.P.
-  RETAINING WALL
-  DETECTABLE WARNING PAD
-  TYPE 'C' CATCH BASIN
-  TYPE 'C-L' CATCH BASIN
-  CONVERT CB TO MANHOLE
-  BIOSWALE



No.	Revision/Issue	Date



CITY OF NEW HAVEN
DEPARTMENT OF ENGINEERING

THE HONORABLE JUSTIN M. ELICKER, MAYOR
GIOVANNI ZINN, P.E., CITY ENGINEER



Project Name and Address

QUINNIPIAC AVENUE
MAJOR CORRIDOR IMPROVEMENTS

Drawn By

AW, CF

Designed By

AW, CF

Date

1/30/2024

Project Number

L092-0006

Professional Seal

Sheet Title
SIGNING AND PAVEMENT MARKING PLAN

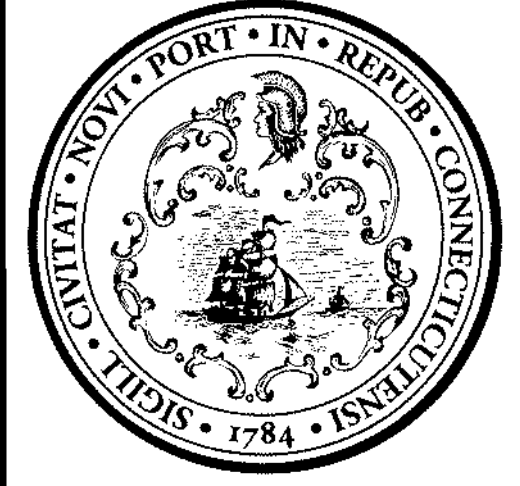
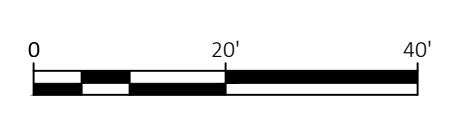
Sheet Number

SPM-4

C:\USERS\CHRIS FLANAGAN\CITY OF NEW HAVEN, CT\ENGINEERING DEPARTMENT - DOCUMENTS (1)\PROJECTS\18-136-01 QUINNIPIAC AVE\DRAWINGS\SHEET\18-136-C-SPM.DWG



LEGEND			
	CONCRETE SIDEWALK		12" STORM R.C.P.
	CONCRETE DRIVEWAY		TYPE 'C' CATCH BASIN
	GRANITE CURB		TYPE 'C-L' CATCH BASIN
	RETAINING WALL		CONVERT CB TO MANHOLE
	DETECTABLE WARNING PAD		BIOSWALE



No.	Revision/Issue	Date



CITY OF NEW HAVEN
DEPARTMENT OF ENGINEERING

THE HONORABLE JUSTIN M. ELICKER, MAYOR
GIOVANNI ZINN, P.E., CITY ENGINEER

Project Name and Address
QUINNIPIAC AVENUE MAJOR CORRIDOR IMPROVEMENTS

Drawn By: AW, CF
Designed By: AW, CF
Date: 1/30/2024
Project Number: L092-0006

Professional Seal

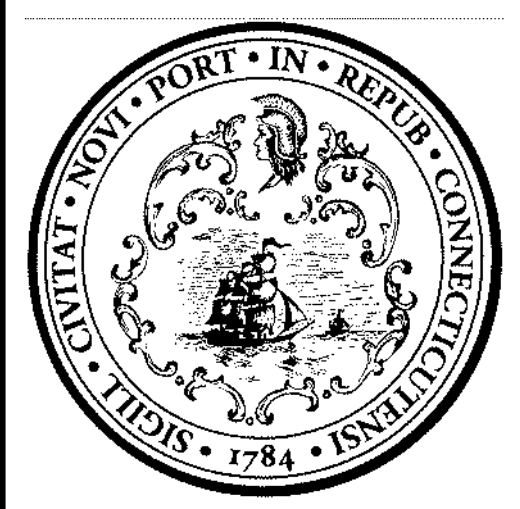
Sheet Title: SIGNING AND PAVEMENT MARKING PLAN
Sheet Number

SPM-5

C:\USERS\CHRIS FLANAGAN\CITY OF NEW HAVEN, CT\ENGINEERING DEPARTMENT - DOCUMENTS (1)\PROJECTS\18-136-01 QUINNIPIAC AVE\DRAWINGS\SHEET\18-136-C-SPM.DWG



LEGEND			
	CONCRETE SIDEWALK		12" STORM R.C.P.
	CONCRETE DRIVEWAY		RETAINING WALL
	GRANITE CURB		DETECTABLE WARNING PAD
	TYPE 'C' CATCH BASIN		TYPE 'C-L' CATCH BASIN
	BIOSWALE		CONVERT CB TO MANHOLE



No.	Revision/Issue	Date

CITY OF NEW HAVEN
 DEPARTMENT OF ENGINEERING

THE HONORABLE JUSTIN M. ELICKER, MAYOR
 GIOVANNI ZINN, P.E., CITY ENGINEER

Project Name and Address
QUINNIPIAC AVENUE MAJOR CORRIDOR IMPROVEMENTS

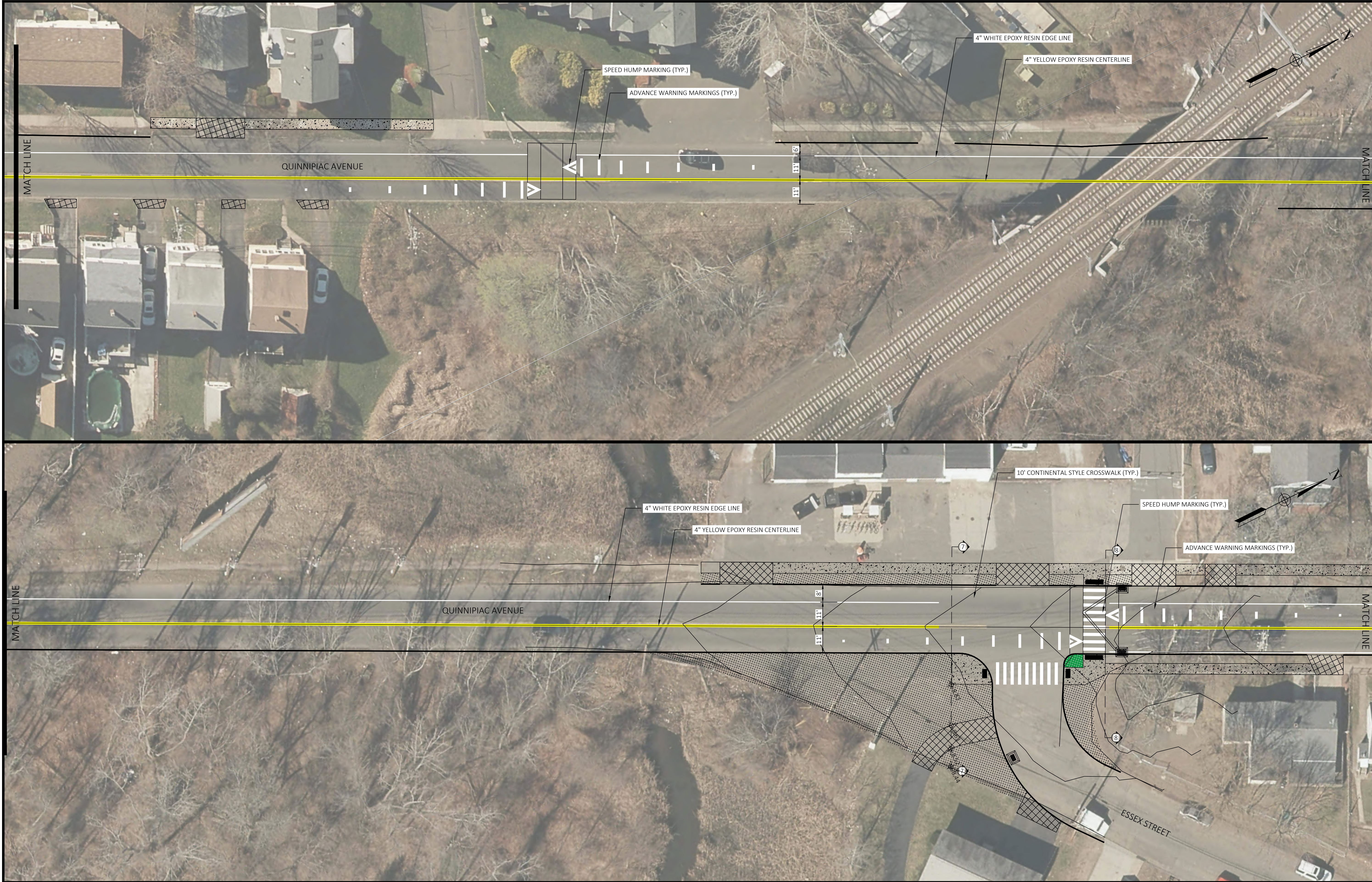
Drawn By: AW, CF
 Designed By: AW, CF
 Date: 1/30/2024
 Project Number: L092-0006

Professional Seal

Sheet Title: SIGNING AND PAVEMENT MARKING PLAN
 Sheet Number

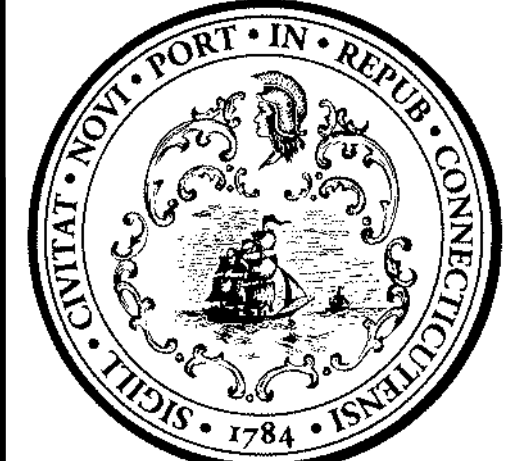
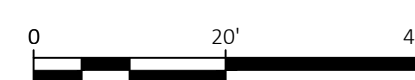
SPM-6

C:\USERS\CHRIS FLANAGAN\CITY OF NEW HAVEN, CT\ENGINEERING DEPARTMENT - DOCUMENTS\18-136-01 QUINNIPIAC AVE\DRAWINGS\SHEET\18-136-C-SPM.DWG



LEGEND

	CONCRETE SIDEWALK		12" STORM R.C.P.		TYPE 'C' CATCH BASIN		BIOSWALE
	CONCRETE DRIVEWAY		RETAINING WALL		TYPE 'C-L' CATCH BASIN		DETECTABLE WARNING PAD
	GRANITE CURB		CONVERT CB TO MANHOLE				

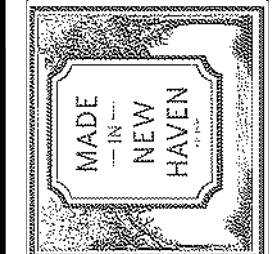


No.	Revision/Issue	Date



CITY OF NEW HAVEN
DEPARTMENT OF ENGINEERING

THE HONORABLE JUSTIN M. ELICKER, MAYOR
GIOVANNI ZINN, P.E., CITY ENGINEER



Project Name and Address
QUINNIPIAC AVENUE MAJOR CORRIDOR IMPROVEMENTS

Drawn By	AW, CF
Designed By	AW, CF
Date	1/30/2024
Project Number	L092-0006

Professional Seal

Sheet Title
SIGNING AND PAVEMENT MARKING PLAN
Sheet Number

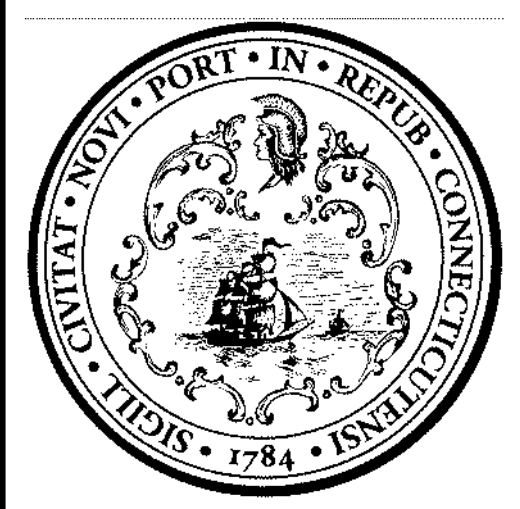
SPM-7

C:\USERS\CHRIS FLANAGAN\CITY OF NEW HAVEN, CT\ENGINEERING DEPARTMENT - DOCUMENTS (1)\PROJECTS\18-136-01 QUINNIPIAC AVE\DRAWINGS\SHEET\18-136-C-SPM.DWG



LEGEND

	CONCRETE SIDEWALK		12" STORM R.C.P.		TYPE 'C' CATCH BASIN		BIOSWALE
	CONCRETE DRIVEWAY		RETAINING WALL		TYPE 'C-L' CATCH BASIN		CONVERT CB TO MANHOLE
	GRANITE CURB		DETECTABLE WARNING PAD				



No.	Revision/Issue	Date

CITY OF NEW HAVEN
 DEPARTMENT OF ENGINEERING

THE HONORABLE JUSTIN M. ELICKER, MAYOR
 GIOVANNI ZINN, P.E., CITY ENGINEER

Project Name and Address
QUINNIPIAC AVENUE MAJOR CORRIDOR IMPROVEMENTS

Drawn By	AW, CF
Designed By	AW, CF
Date	1/30/2024
Project Number	L092-0006

Professional Seal

Sheet Title
SIGNING AND PAVEMENT MARKING PLAN

Sheet Number

SPM-8