

State Street Redesign

Public Meeting #1 – September 13, 2022

**Economic Development Administration
Engineering Department**

**CITY OF NEW HAVEN
JUSTIN ELICKER, MAYOR
BOARD OF ALDERS**

**TOGETHER
NEW HAVEN**

State St Overview



Opportunities



A Grand Ave (facing west) at Olive St



B State St parking lot b/t Grand Ave and Court St



C State St parking lot near Chapel St



D Union St at Fair St (facing south)



E State St N at KOC building (facing south)



F Water St at Olive St (facing west)



Wooster Sq. Planning Study



July 18th, 2016
New Haven Wooster Square Planning Study

Wooster Square Planning Study: Discussion topics for group session:

- How do we build on the local identity, culture, and neighborhood form of Wooster Square?
→ connect to Mill River + Park Path + Water front
- What are the Assets and Opportunities of Wooster Square? Consider,
 - Pedestrian links and connections to downtown and key open spaces
 - Edge conditions along State Street and Water Street.
blank sites - crossings - bridge connections → opportunities for public art, graffiti art
- Development Opportunities
 - How can development be best incorporated into the neighborhood? No Dead End streets → planning sidewalks
 - Where are the key areas of interest? → Cowley + State Street Parking Lots!!! ← Sprinkler + Petra!

General Tree canopy - Ash + trees with + Water Street to Tree Garden - pedestrian
Cherry Blossom Festival - Italian communities merchant's association; members involved? → were the Italian community members involved? → Cherry Blossom - from green to maintain the square
- Crying - makes very important - under of project - example - Chapel St. Public Art.

Architecture & Planning
115 Kingston St.
Boston, MA 02111
(617) 423-7200
utilidesign.com

utilo

Please circle the number that most accurately reflects your connection to the Wooster Square neighborhood (you may circle more than one)

1 Resident (neighborhood)
2 Merchant | Restaurateur | Operator
3 Worker | Professional
4 Property Owner
5 Other

Please list three things you think would make the Wooster Square neighborhood better:

Other comments:

New resident - excited to see it grow!

better sidewalks
improvement around State St.
better bikeways

fairness Mkt.
people watch in the park

Please leave this card on your seat following the meeting so it can be collected by staff.

accurately reflects your connection to the Wooster Square neighborhood (you may circle more than one)

1 Resident (neighborhood)
2 Merchant | Restaurateur | Operator
3 Worker | Professional
4 Property Owner
5 Other

Please list three things you think would make the Wooster Square neighborhood better:

Other comments:

more retail
e food
Union Station should be easily walkable

I like the St initiatives I they make so I feel there can be a holistic approach including! - Rury power

Please leave this card on your seat following the meeting so it can be collected by staff.

State St Infrastructure

- \$6.7M estimate
- 80% State / 20% Local

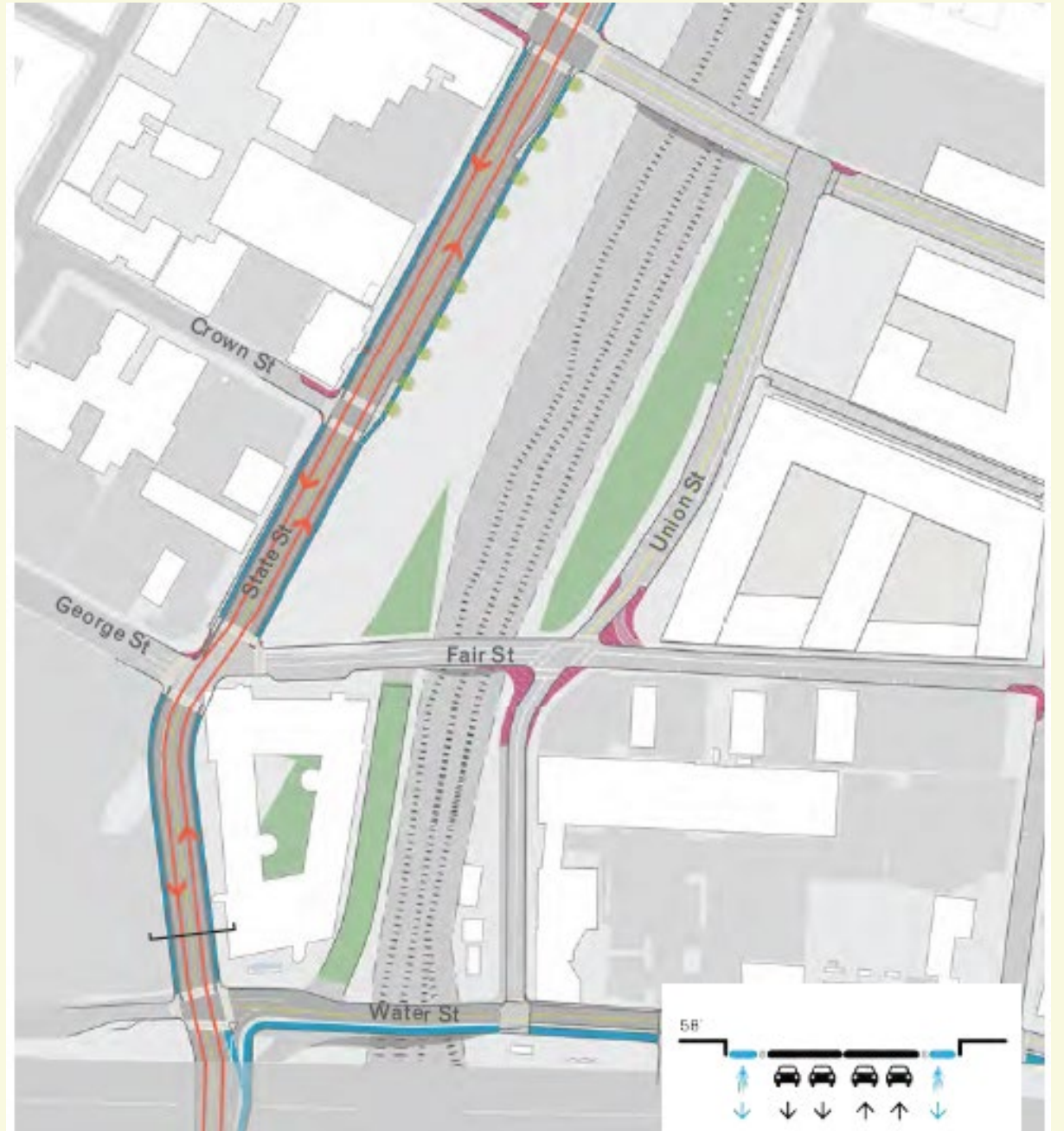
New Development

- +450 new housing units
- +20,000sf of commercial space
- Public & activated space



Concept Design

- Redesign State Street per “Option 3” of Wooster Sq. Planning Study.
- Connect Farmington Canal Greenway, State Street Station and Union Station with enhanced bike/ped improvements.
- Create development sites on State Street between Trumbull and Water including Lot N & Lot O.



Concept Design



- Return to original State St configuration
- Provide buffered pedestrian/bike corridor
- Simplified construction
- Create valuable public space



Traffic Analysis

- Brought in nationally-recognized Toole Design Group
- Better signal synchronization (standard cycle length)
- Provide more time during cycle for bikes/peds
- Better connectivity



Development Opportunities

State St Parcels

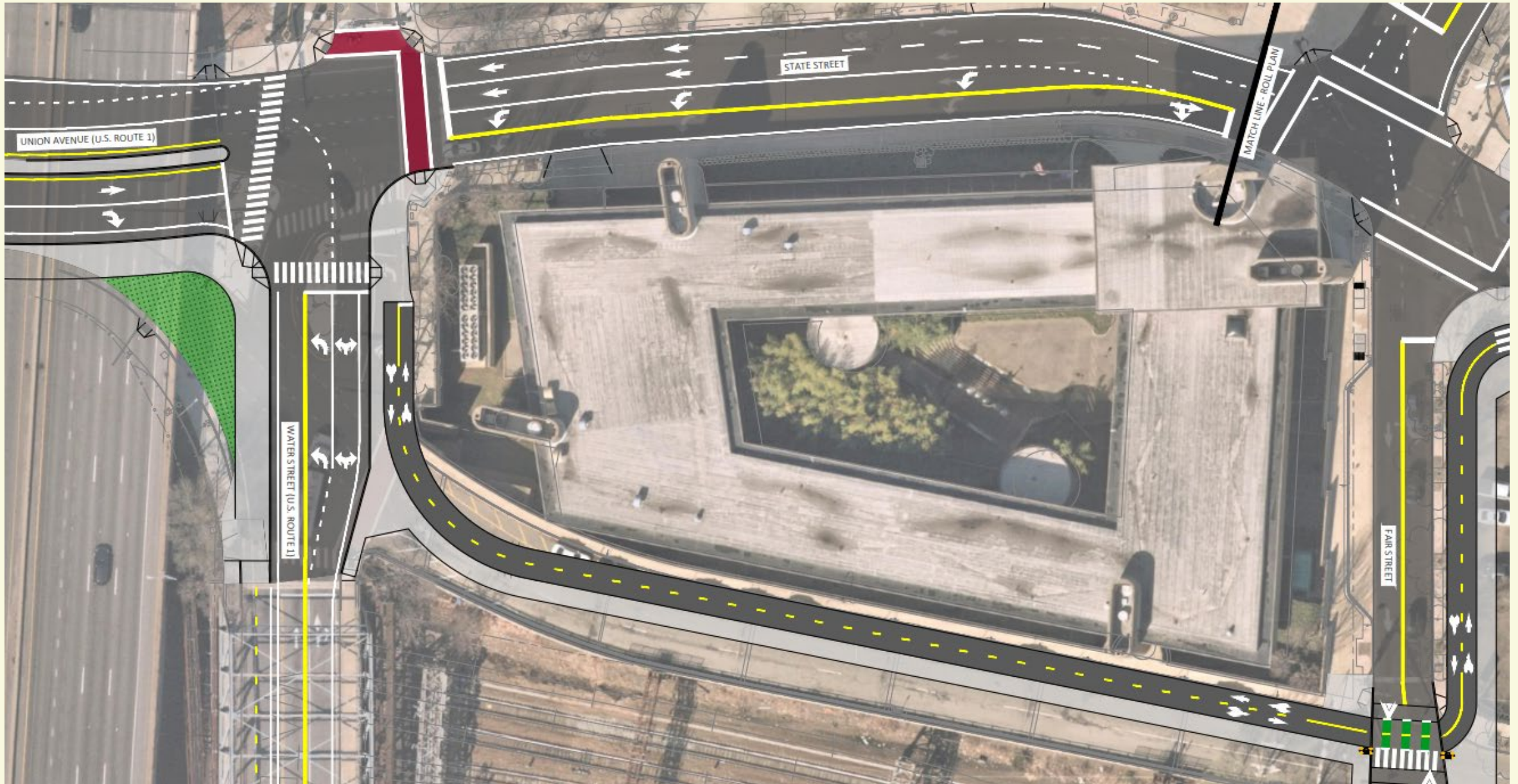
- 4.40 Acres

George St Parcels

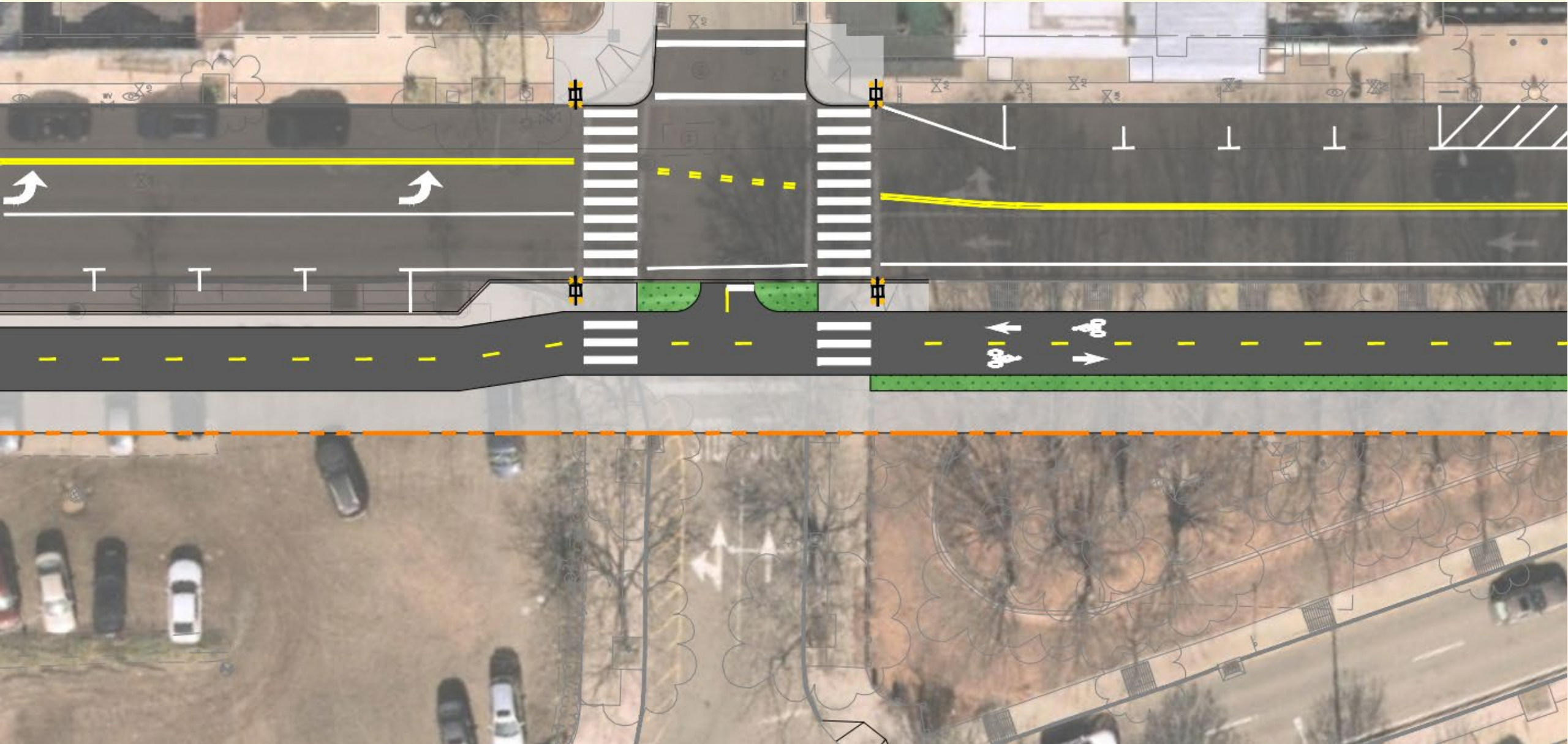
- 0.90 Acres



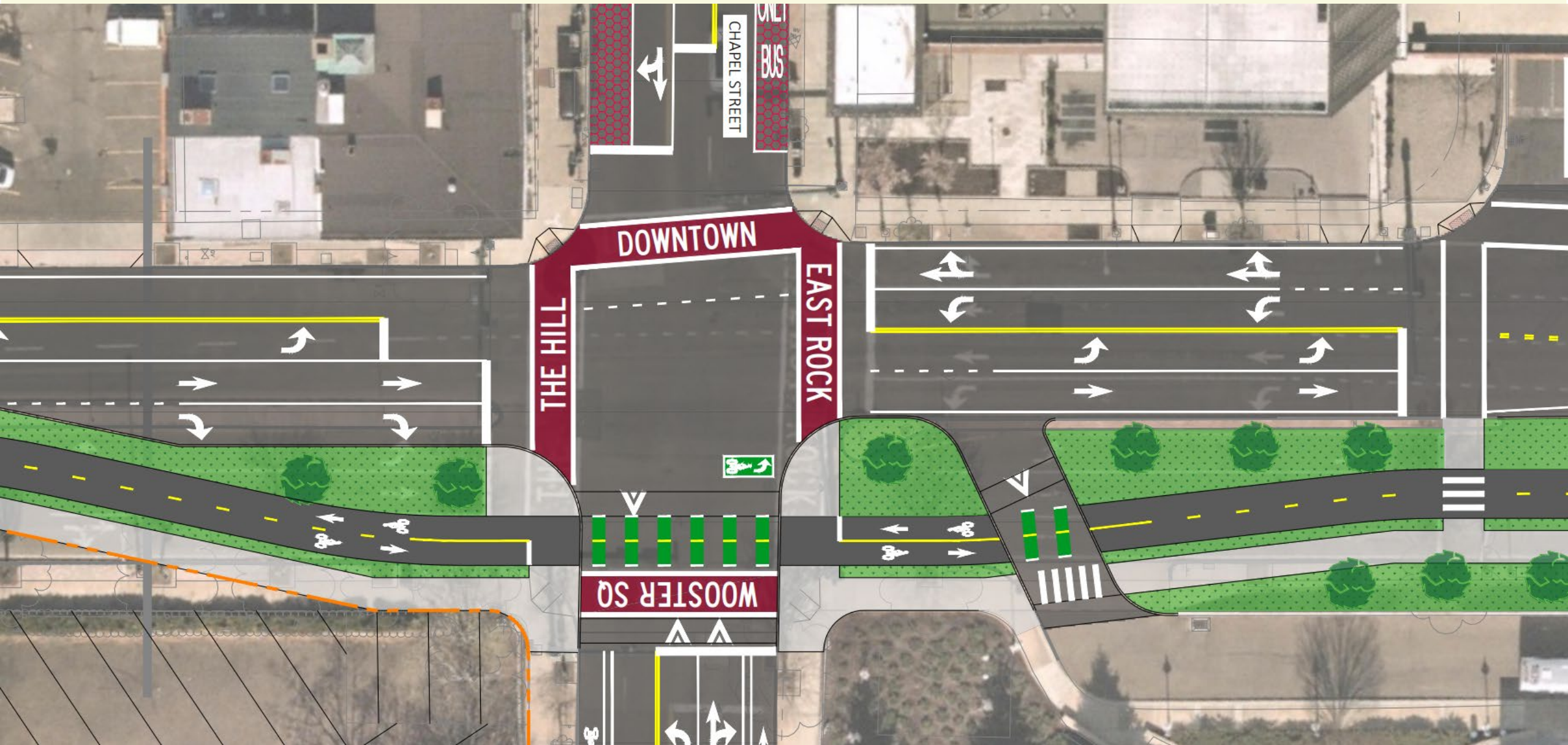
Roadway Details – Water St + George St



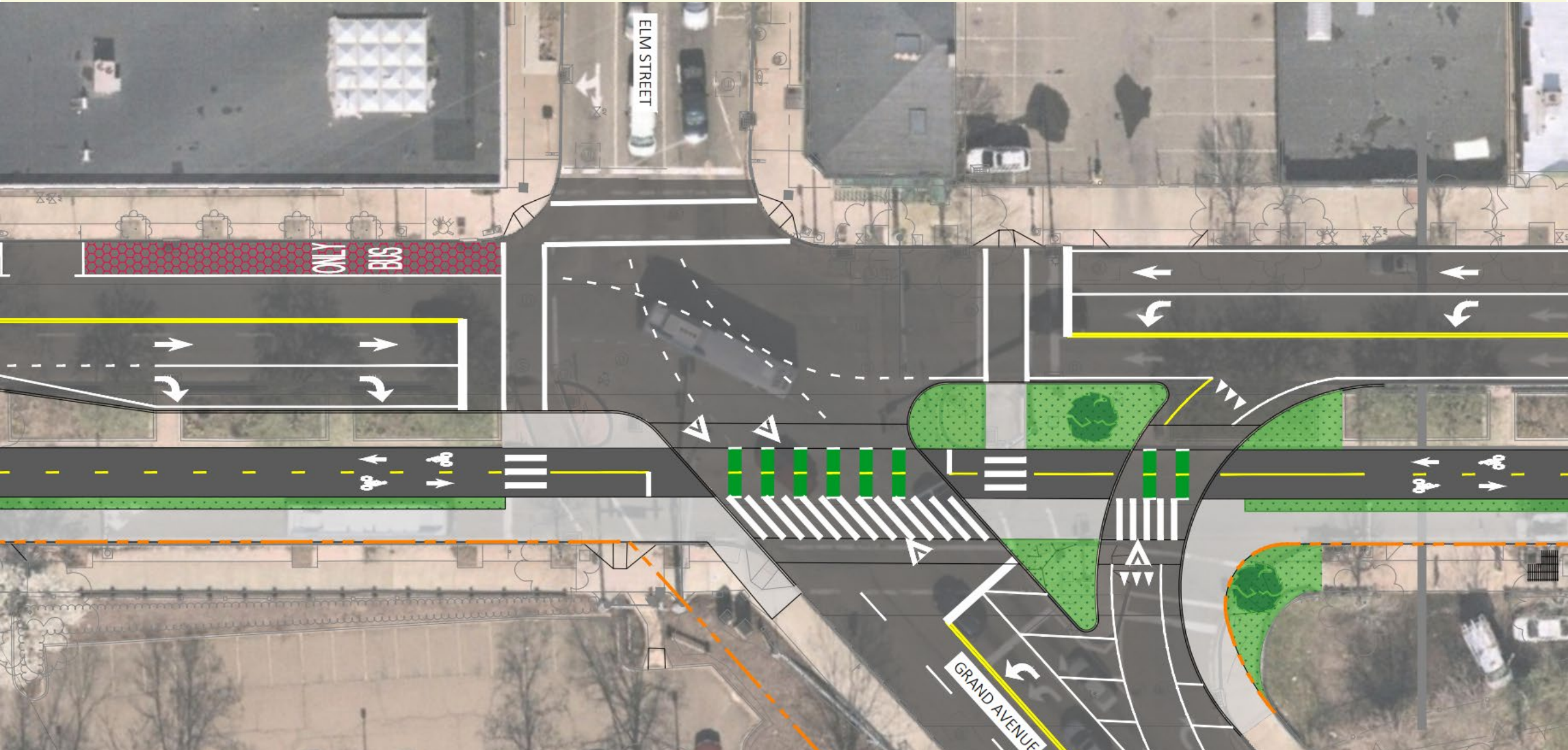
Roadway Details – Crown St



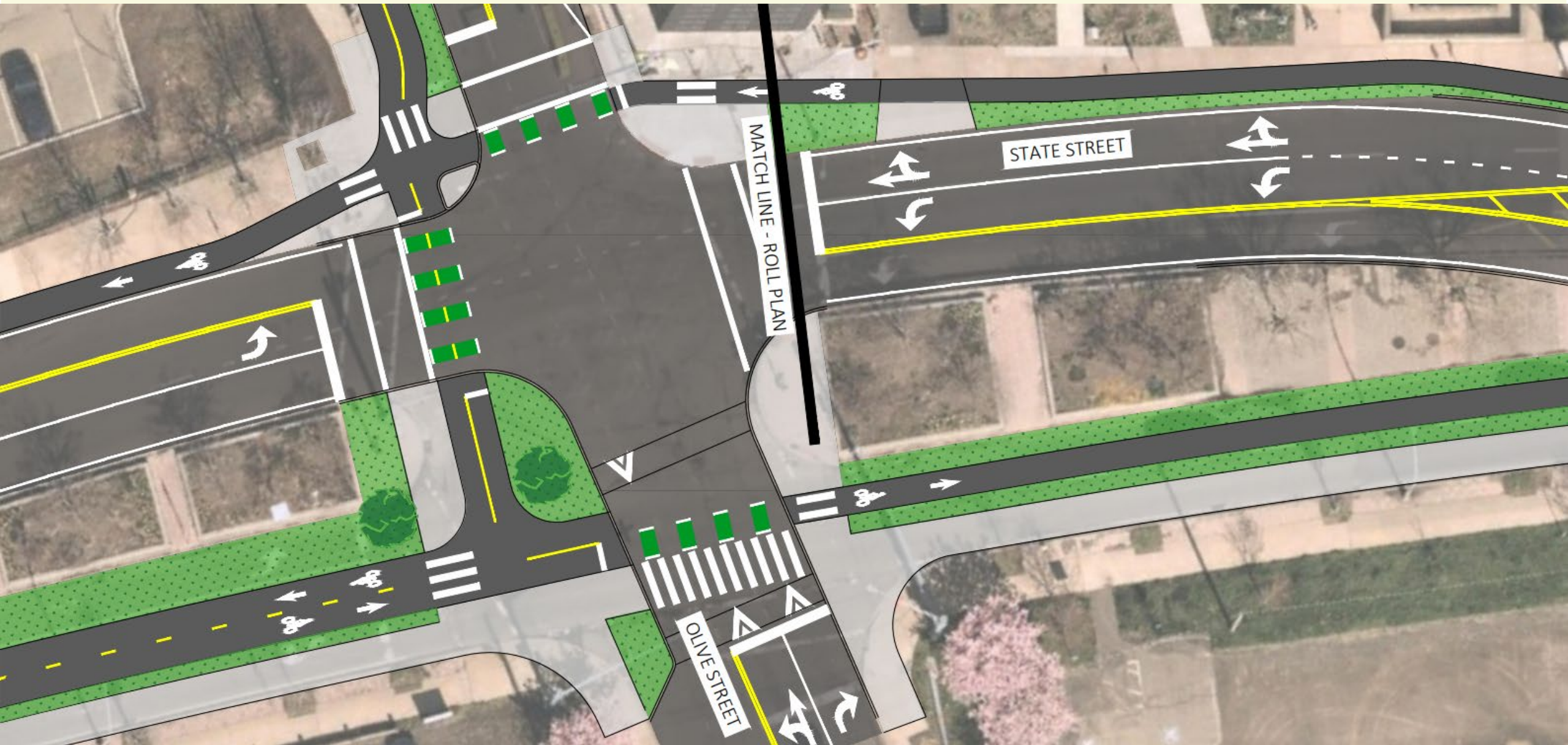
Roadway Details – Chapel St



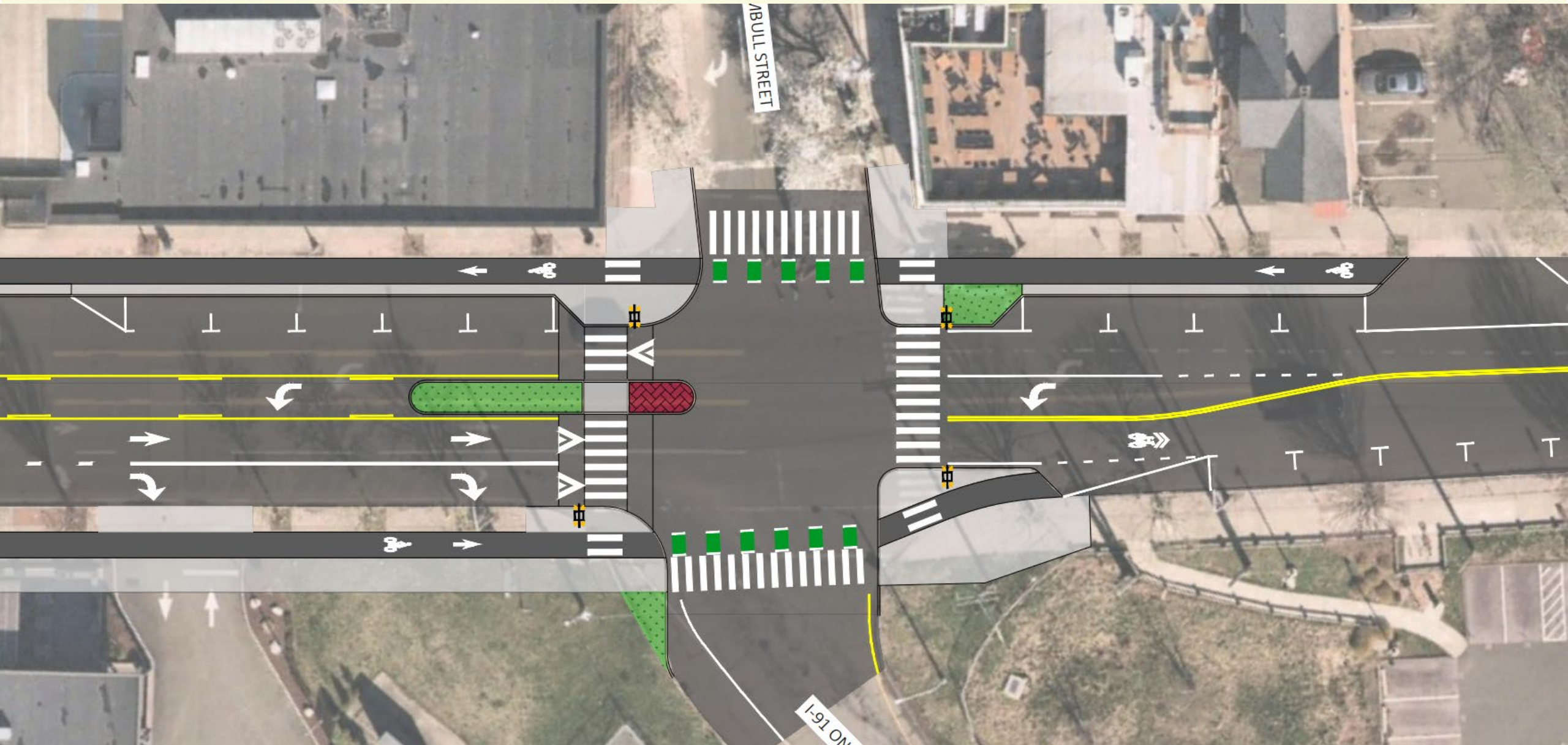
Roadway Details – Grand Ave + Elm St



Roadway Details – Grove St + Olive St



Roadway Details – Trumbull St + I-91 Ramp



Schedule + Next Steps

Schedule

Infrastructure

- 2022-2023 Finalize Design
- 2023 Complete Reviews and Permits
- 2024 Construction

New Development

- 2022-2023 Development Prospectus and 1st RFP
- 2024 Construction

Materials

www.newhavenct.gov/engineering

Look under “complete streets” tab

Contact Us

- gzinn@newhavenct.gov
- dmack@newhavenct.gov